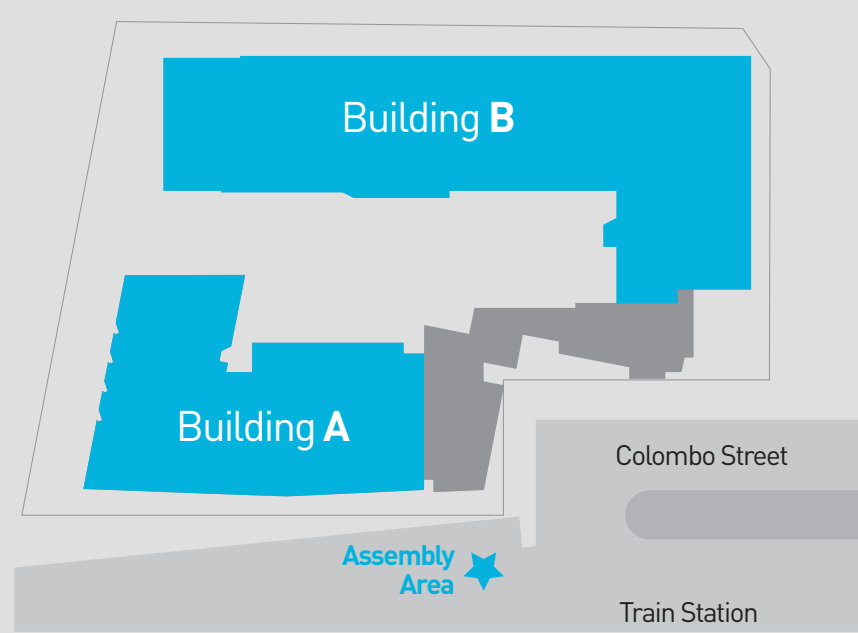


Evacuation Diagram

Lower Basement Plan



Site Location Plan

FE	Fire Extinguisher	EXIT	Exit		Assembly Area
H	Fire Hydrant		Evacuation Route	ES	Electrical Switch
FHR	Fire Hose Reel		You Are Here	GAS	Gas Isolation

For Emergency Dial 000

1 Colombo Street, Mitcham

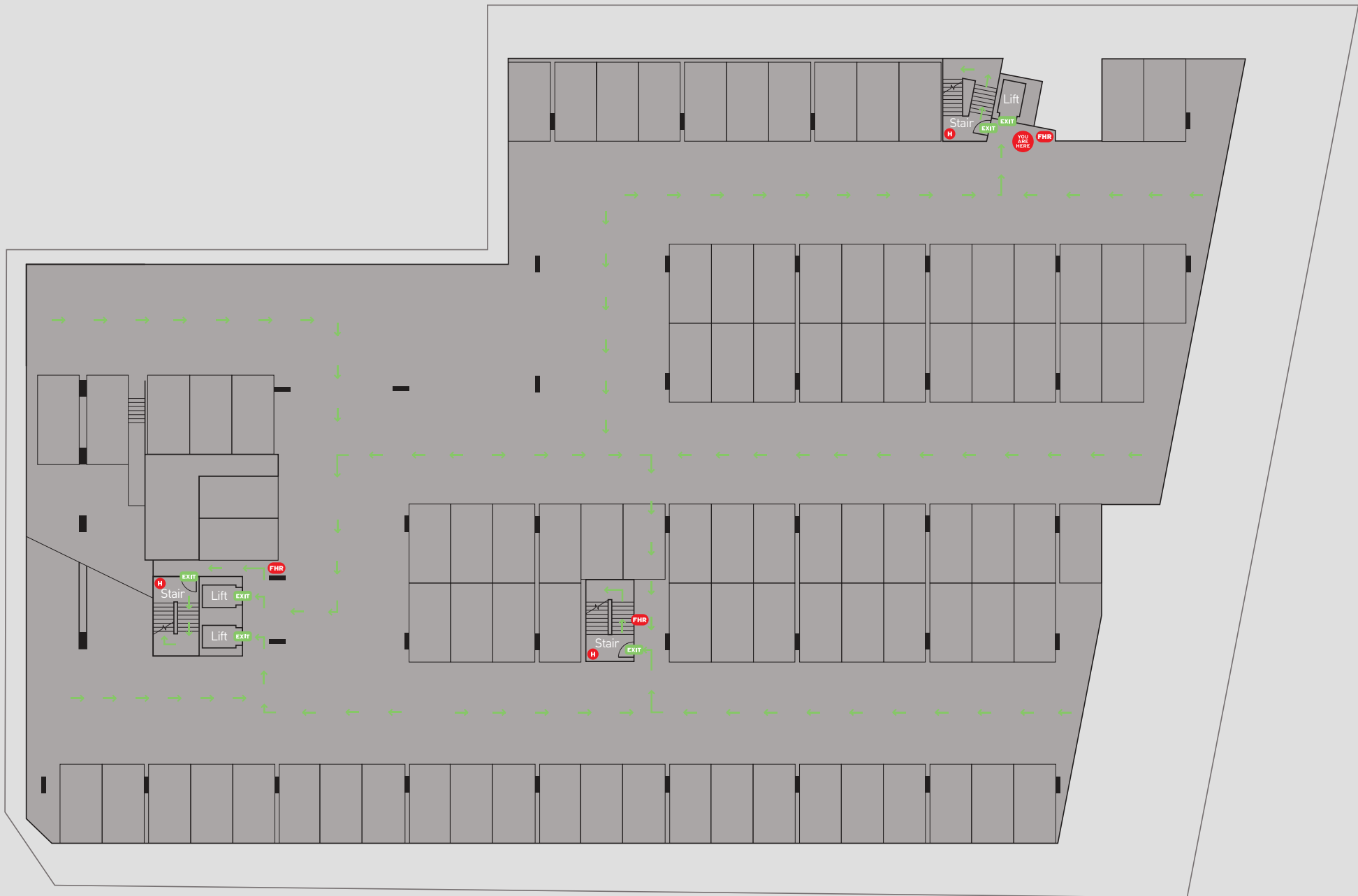
Diagrams produced September 2012

Standard Fire Orders

- 1 Assist anyone in immediate danger if safe to do so. Remove occupants from room of fire origin.
- 2 Close door to isolate fire and smoke.
- 3 Call Fire brigade – 000.
- 4 Attempt to fight the fire with extinguishers or hose reels, only if safe to do so.
- 5 If required or when Evacuation Tones sound, Evacuate to Assembly Area via stairs.
- 6 Remain at assembly Area until advised safe to return by Emergency Service. Report any persons missing to Emergency Service.

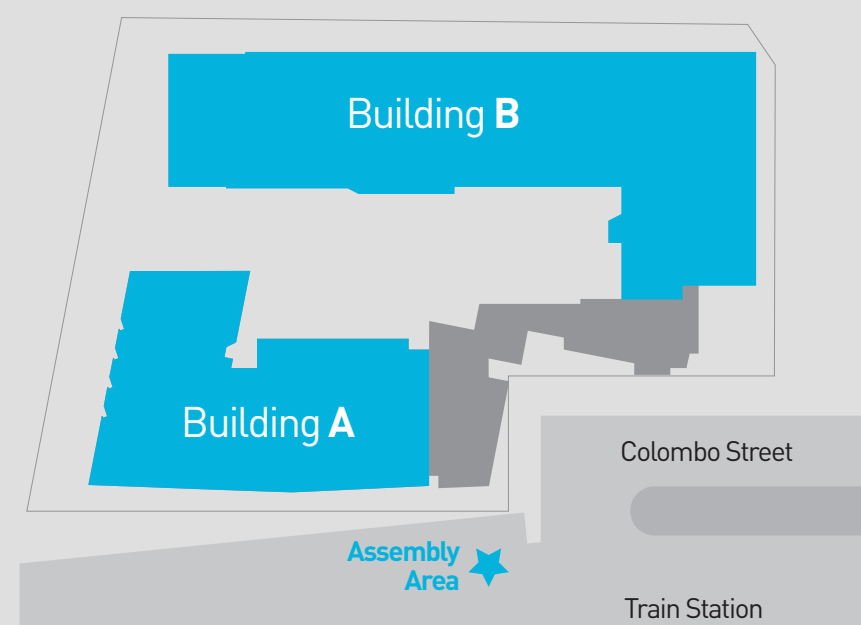
Emergency Procedures

- > On hearing the general fire alarm and the emergency alert system which will state emergency, evacuate the building.
- > Evacuate the building immediately via the nearest exit, closing all doors behind you.
- > The Exit stairs provide an alternative route for evacuation via the carpark if there is a fire on the ground floor. Strobe lights will activate in the stairs with signage indicating the direction and exit route from the basement carpark level. Once in the carpark follow the exit signs to the nearest available exit stair and evacuate back up to the ground floor courtyard.
- > Evacuate to designated assembly area as shown on the Site location plan.
- > Do not re-enter the building until authorised to do so by the responding Emergency service/Chief Warden.



Evacuation Diagram

Lower Basement Plan



Site Location Plan

FE	Fire Extinguisher	EXIT	Exit		Assembly Area
H	Fire Hydrant		Evacuation Route	ES	Electrical Switch
FHR	Fire Hose Reel	YOU ARE HERE	You Are Here	GAS	Gas Isolation

Standard Fire Orders

- 1 Assist anyone in immediate danger if safe to do so. Remove occupants from room of fire origin.
- 2 Close door to isolate fire and smoke.
- 3 Call Fire brigade – 000.
- 4 Attempt to fight the fire with extinguishers or hose reels, only if safe to do so.
- 5 If required or when Evacuation Tones sound, Evacuate to Assembly Area via stairs.
- 6 Remain at assembly Area until advised safe to return by Emergency Service. Report any persons missing to Emergency Service.

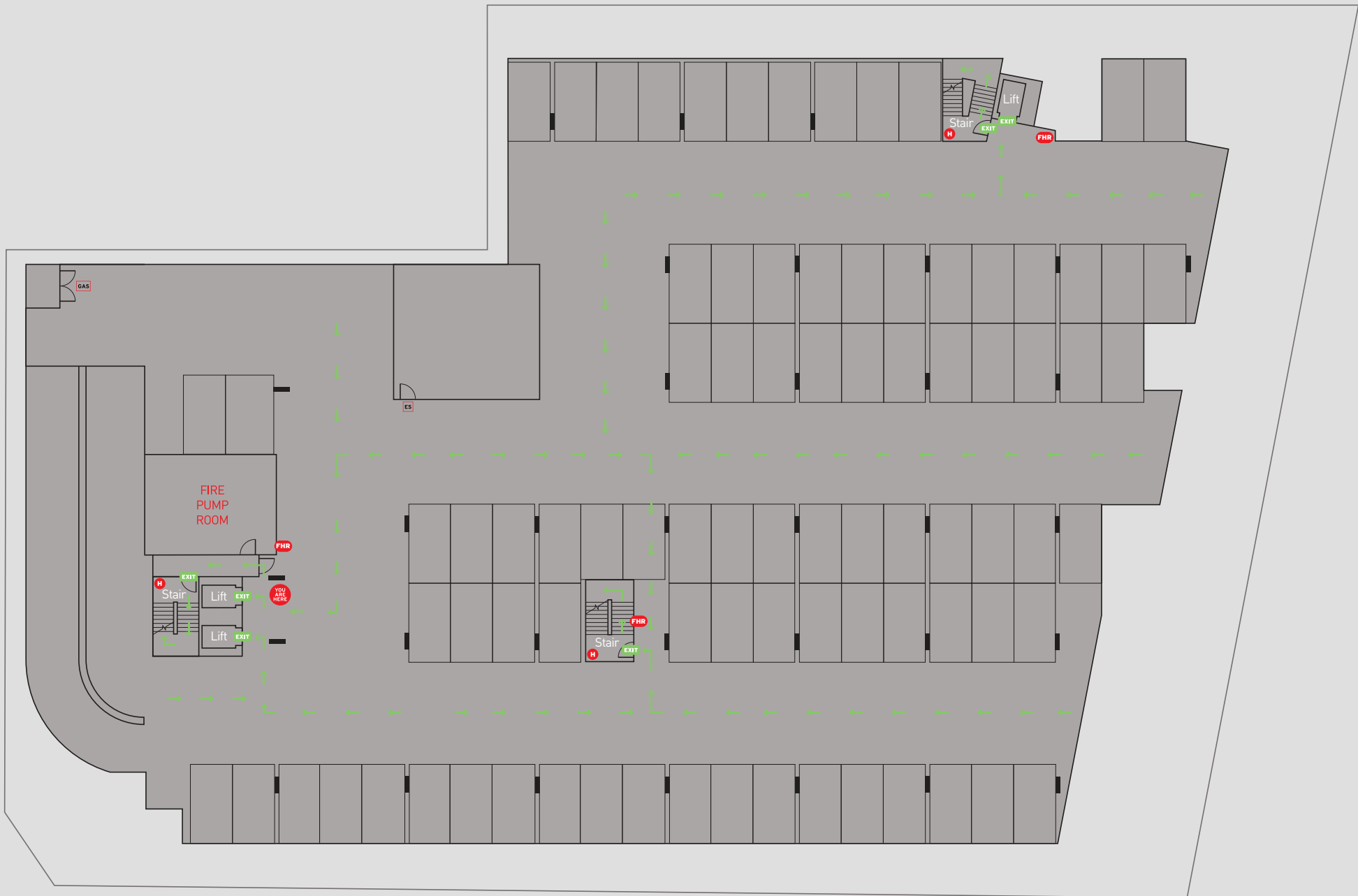
Emergency Procedures

- > On hearing the general fire alarm and the emergency alert system which will state emergency, evacuate the building.
- > Evacuate the building immediately via the nearest exit, closing all doors behind you.
- > The Exit stairs provide an alternative route for evacuation via the carpark if there is a fire on the ground floor. Strobe lights will activate in the stairs with signage indicating the direction and exit route from the basement carpark level. Once in the carpark follow the exit signs to the nearest available exit stair and evacuate back up to the ground floor courtyard.
- > Evacuate to designated assembly area as shown on the Site location plan.
- > Do not re-enter the building until authorised to do so by the responding Emergency service/Chief Warden.

For Emergency Dial 000

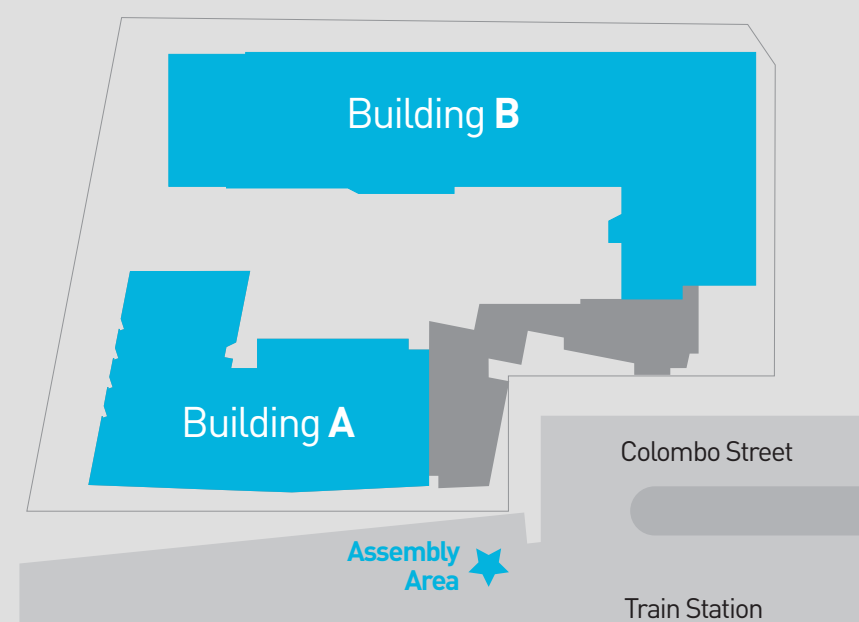
1 Colombo Street, Mitcham

Diagrams produced September 2012



Evacuation Diagram

Upper Basement Plan



Site Location Plan

Standard Fire Orders

- 1 Assist anyone in immediate danger if safe to do so. Remove occupants from room of fire origin.
- 2 Close door to isolate fire and smoke.
- 3 Call Fire brigade – 000.
- 4 Attempt to fight the fire with extinguishers or hose reels, only if safe to do so.
- 5 If required or when Evacuation Tones sound, Evacuate to Assembly Area via stairs.
- 6 Remain at assembly Area until advised safe to return by Emergency Service. Report any persons missing to Emergency Service.

Emergency Procedures

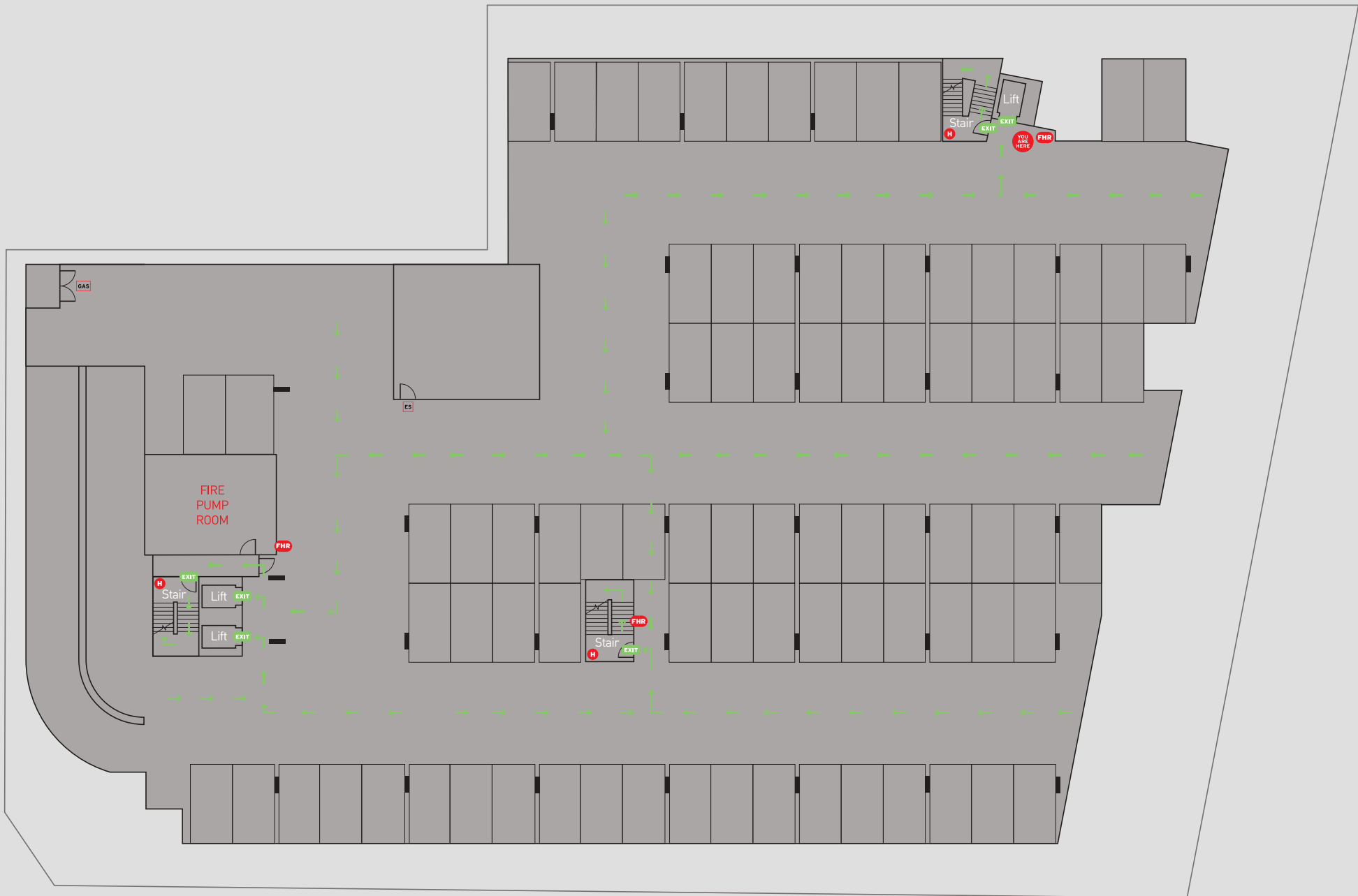
- > On hearing the general fire alarm and the emergency alert system which will state emergency, evacuate the building.
- > Evacuate the building immediately via the nearest exit, closing all doors behind you.
- > The Exit stairs provide an alternative route for evacuation via the carpark if there is a fire on the ground floor. Strobe lights will activate in the stairs with signage indicating the direction and exit route from the basement carpark level. Once in the carpark follow the exit signs to the nearest available exit stair and evacuate back up to the ground floor courtyard.
- > Evacuate to designated assembly area as shown on the Site location plan.
- > Do not re-enter the building until authorised to do so by the responding Emergency service/Chief Warden.

FE	Fire Extinguisher	EXIT	Exit		Assembly Area
H	Fire Hydrant		Evacuation Route	ES	Electrical Switch
FHR	Fire Hose Reel	YOU ARE HERE	You Are Here	GAS	Gas Isolation

For Emergency Dial 000

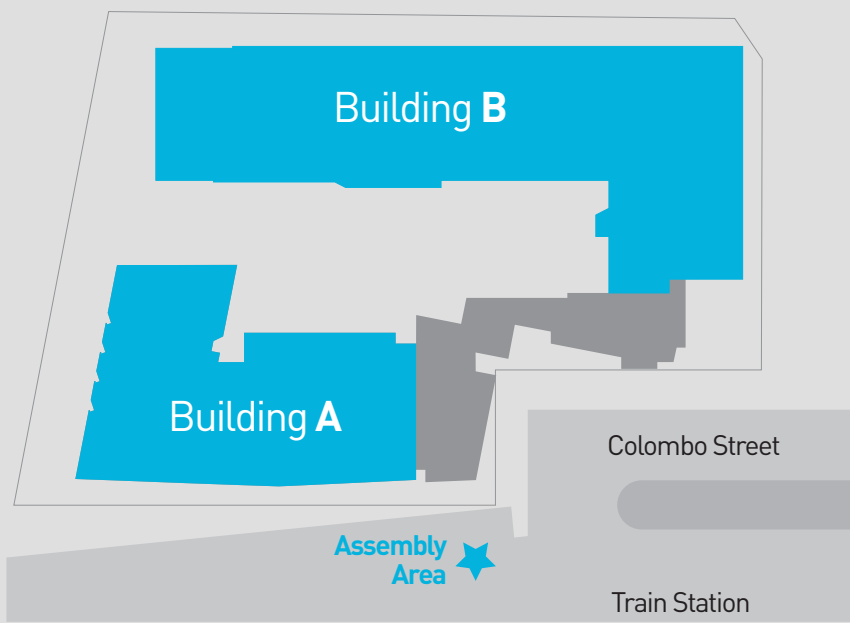
1 Colombo Street, Mitcham

Diagrams produced September 2012



Evacuation Diagram

Upper Basement Plan



Site Location Plan

Standard Fire Orders

Emergency Procedures

- 1 Assist anyone in immediate danger if safe to do so. Remove occupants from room of fire origin.
 - 2 Close door to isolate fire and smoke.
 - 3 Call Fire brigade – 000.
 - 4 Attempt to fight the fire with extinguishers or hose reels, only if safe to do so.
 - 5 If required or when Evacuation Tones sound, Evacuate to Assembly Area via stairs.
 - 6 Remain at assembly Area until advised safe to return by Emergency Service. Report any persons missing to Emergency Service.
- > On hearing the general fire alarm and the emergency alert system which will state emergency, evacuate the building.
 - > Evacuate the building immediately via the nearest exit, closing all doors behind you.
 - > The Exit stairs provide an alternative route for evacuation via the carpark if there is a fire on the ground floor. Strobe lights will activate in the stairs with signage indicating the direction and exit route from the basement carpark level. Once in the carpark follow the exit signs to the nearest available exit stair and evacuate back up to the ground floor courtyard.
 - > Evacuate to designated assembly area as shown on the Site location plan.
 - > Do not re-enter the building until authorised to do so by the responding Emergency service/Chief Warden.

FE	Fire Extinguisher	EXIT	Exit		Assembly Area
H	Fire Hydrant		Evacuation Route	ES	Electrical Switch
FHR	Fire Hose Reel	YOU ARE HERE	You Are Here	GAS	Gas Isolation

For Emergency Dial 000

1 Colombo Street, Mitcham

Standard Fire Orders

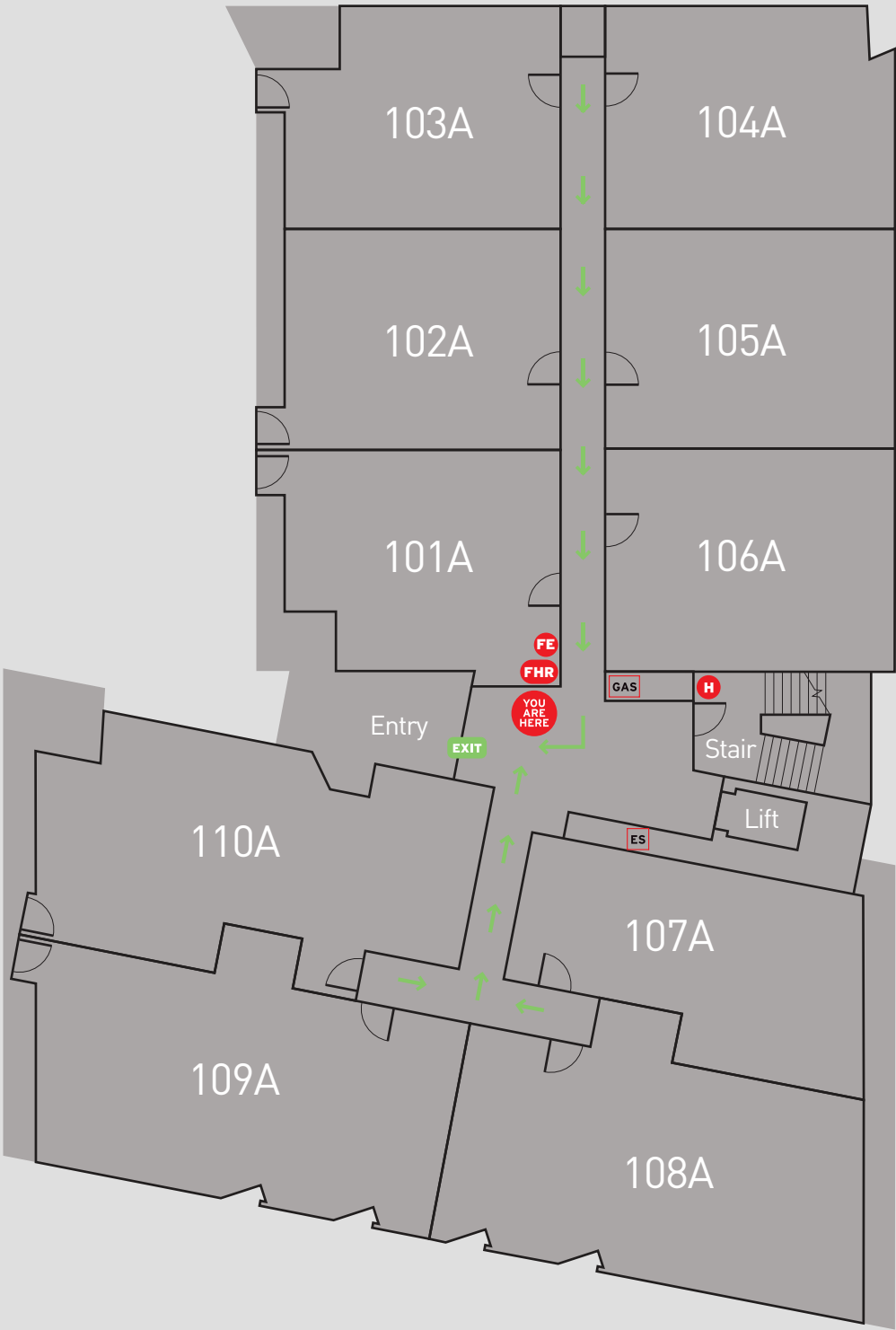
- 1 Assist anyone in immediate danger if safe to do so. Remove occupants from room of fire origin.
- 2 Close door to isolate fire and smoke.
- 3 Call Fire brigade – 000.
- 4 Attempt to fight the fire with extinguishers or hose reels, only if safe to do so.
- 5 If required or when Evacuation Tones sound, Evacuate to Assembly Area via stairs.
- 6 Remain at assembly Area until advised safe to return by Emergency Service. Report any persons missing to Emergency Service.

Emergency Procedures

- > On hearing the general fire alarm and the emergency alert system which will state emergency, evacuate the building.
- > Evacuate the building immediately via the nearest exit, closing all doors behind you.
- > The Exit stairs provide an alternative route for evacuation via the carpark if there is a fire on the ground floor. Strobe lights will activate in the stairs with signage indicating the direction and exit route from the basement carpark level. Once in the carpark follow the exit signs to the nearest available exit stair and evacuate back up to the ground floor courtyard.
- > Evacuate to designated assembly area as shown on the Site location plan.
- > Do not re-enter the building until authorised to do so by the responding Emergency service/Chief Warden.



Site Location Plan



Evacuation Diagram
Building A, Level one Plan

FE	Fire Extinguisher	EXIT	Exit	ES	Electrical Switch		Assembly Area
H	Fire Hydrant		Evacuation Route	GAS	Gas Isolation		You Are Here
FHR	Fire Hose Reel						

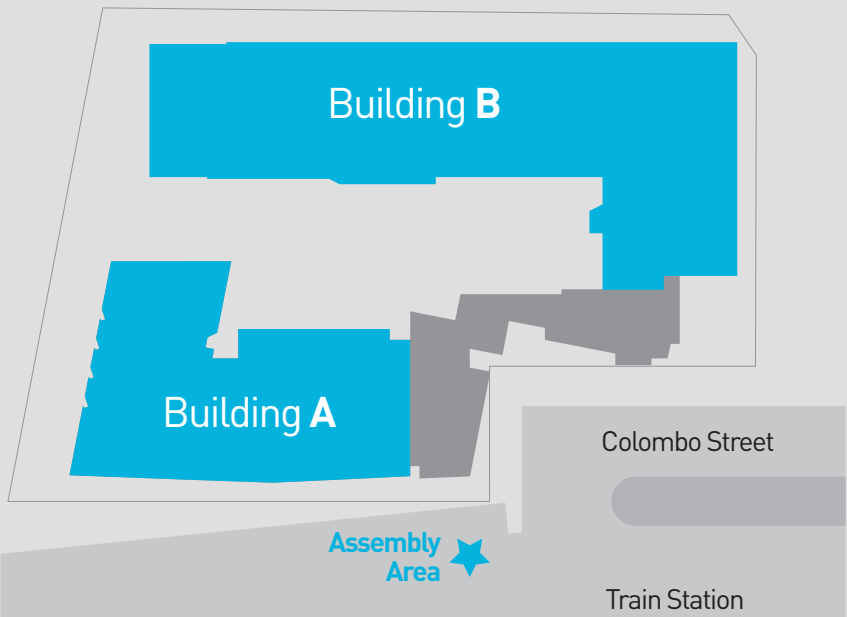
For Emergency Dial 000
1 Colombo Street, Mitcham

Standard Fire Orders

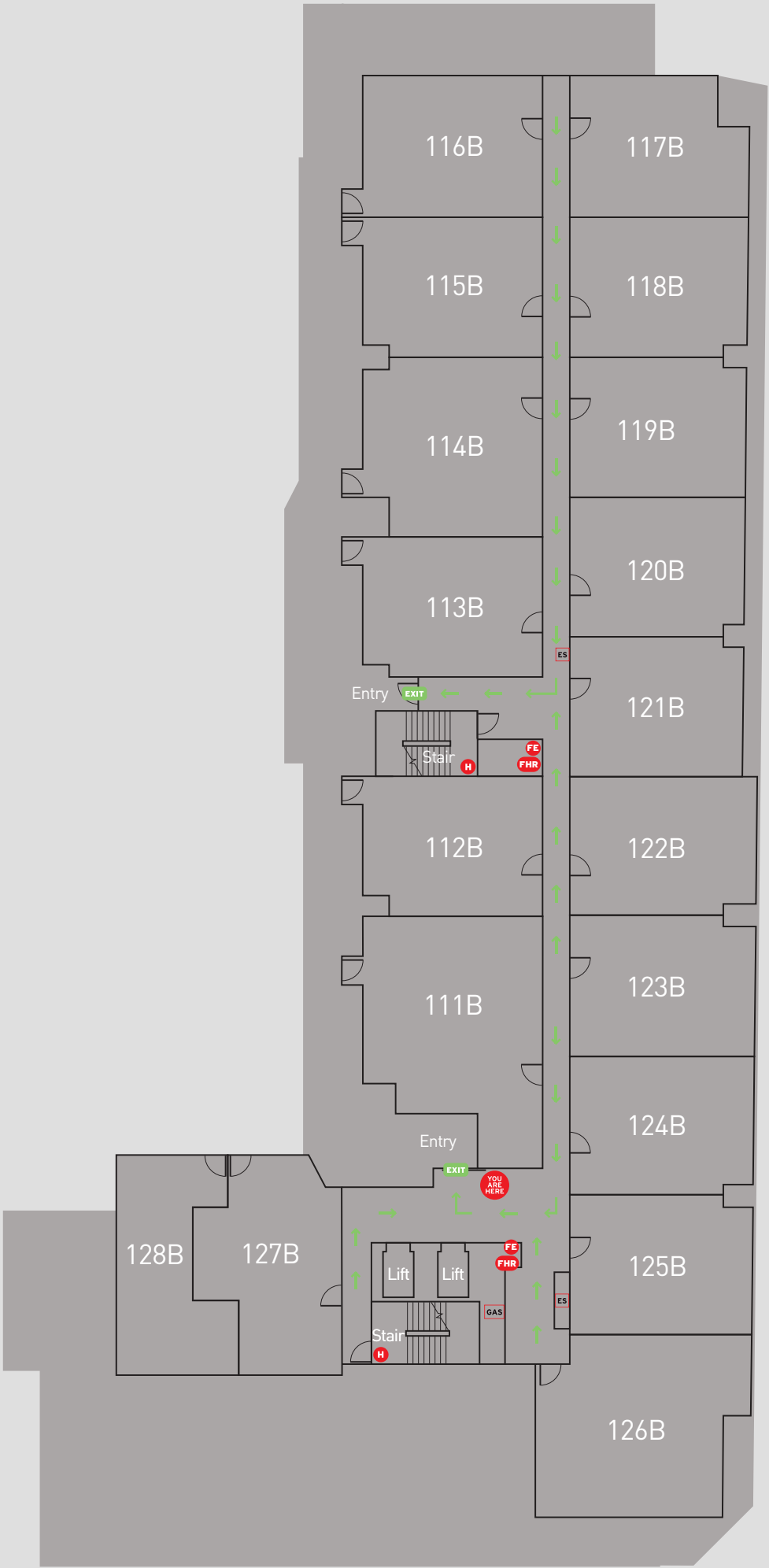
- 1 Assist anyone in immediate danger if safe to do so. Remove occupants from room of fire origin.
- 2 Close door to isolate fire and smoke.
- 3 Call Fire brigade – 000.
- 4 Attempt to fight the fire with extinguishers or hose reels, only if safe to do so.
- 5 If required or when Evacuation Tones sound, Evacuate to Assembly Area via stairs.
- 6 Remain at assembly Area until advised safe to return by Emergency Service. Report any persons missing to Emergency Service.

Emergency Procedures

- > On hearing the general fire alarm and the emergency alert system which will state amergency, evacuate the building.
- > Evacuate the building immediately via the nearest exit, closing all doors behind you.
- > The Exit stairs provide an alternative route for evacuation via the carpark if there is a fire on the ground floor. Strobe lights will activate in the stairs with signage indicating the direction and exit route from the basement carpark level. Once in the carpark follow the exit signs to the nearest available exit stair and evacuate back up to the ground floor courtyard.
- > Evacuate to designated assembly area as shown on the Site location plan.
- > Do not re-enter the building until authorised to do so by the responding Emergency service/Chief Warden.



Site Location Plan



Evacuation Diagram

Building B, Level One Plan

FE	Fire Extinguisher	EXIT	Exit	ES	Electrical Switch		Assembly Area
H	Fire Hydrant		Evacuation Route	GAS	Gas Isolation		You Are Here
FHR	Fire Hose Reel						

For Emergency Dial 000

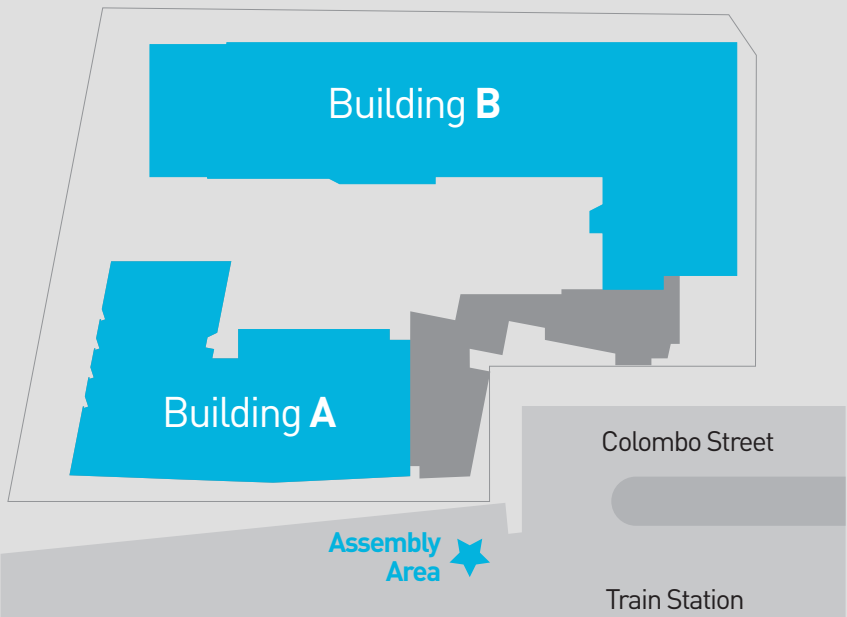
1 Colombo Street, Mitcham

Standard Fire Orders

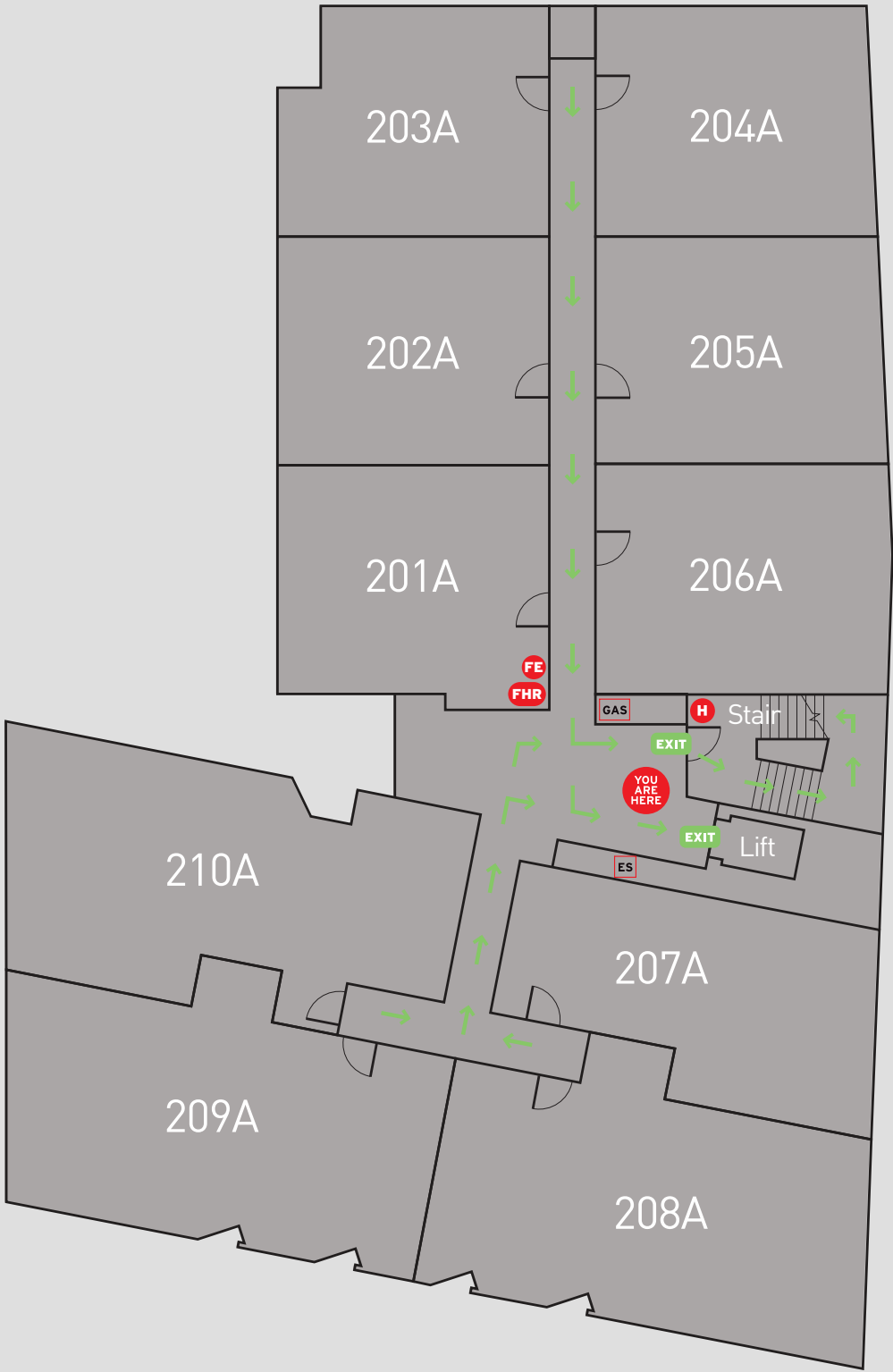
- 1 Assist anyone in immediate danger if safe to do so. Remove occupants from room of fire origin.
- 2 Close door to isolate fire and smoke.
- 3 Call Fire brigade – 000.
- 4 Attempt to fight the fire with extinguishers or hose reels, only if safe to do so.
- 5 If required or when Evacuation Tones sound, Evacuate to Assembly Area via lift and stairs.
- 6 You may use the lifts to Evacuate when the “LIFT AVAILABLE” sign is operating.
- 7 Remain at assembly Area until advised safe to return by Emergency Service. Report any persons missing to Emergency Service.

Emergency Procedures

- > On hearing the general fire alarm and the emergency alert system which will state amergency, evacuate the building.
- > You may take the lift if the “LIFT AVAILABLE” sign is operating. When the lift arrives, enter the lift and it will take you to the ground floor.
- > If the lift stops at a floor and the doors open, quickly leave the lift, move to the Exit Stair and continue the evacuation by the stair.
- > Evacuate the building immediately via the nearest stair or lift, closing all doors behind you.
- > Evacuate to designated assembly area as shown on the Site location plan.
- > Do not re-enter the building until authorised to do so by the responding Emergency service/Chief Warden.



Site Location Plan



Evacuation Diagram
Building A, Level two Plan

FE	Fire Extinguisher	EXIT	Exit	ES	Electrical Switch		Assembly Area
H	Fire Hydrant		Evacuation Route	GAS	Gas Isolation		You Are Here
FHR	Fire Hose Reel						

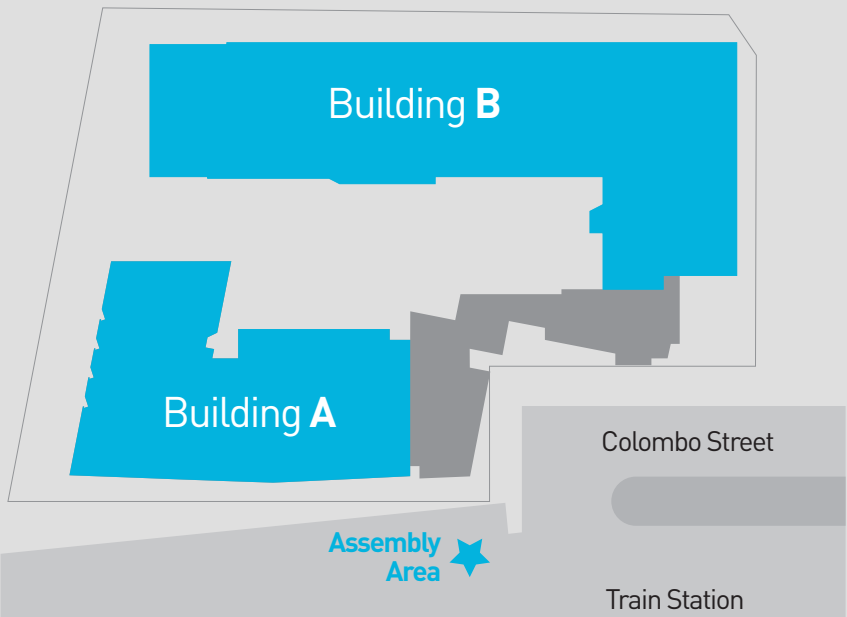
For Emergency Dial 000
1 Colombo Street, Mitcham

Standard Fire Orders

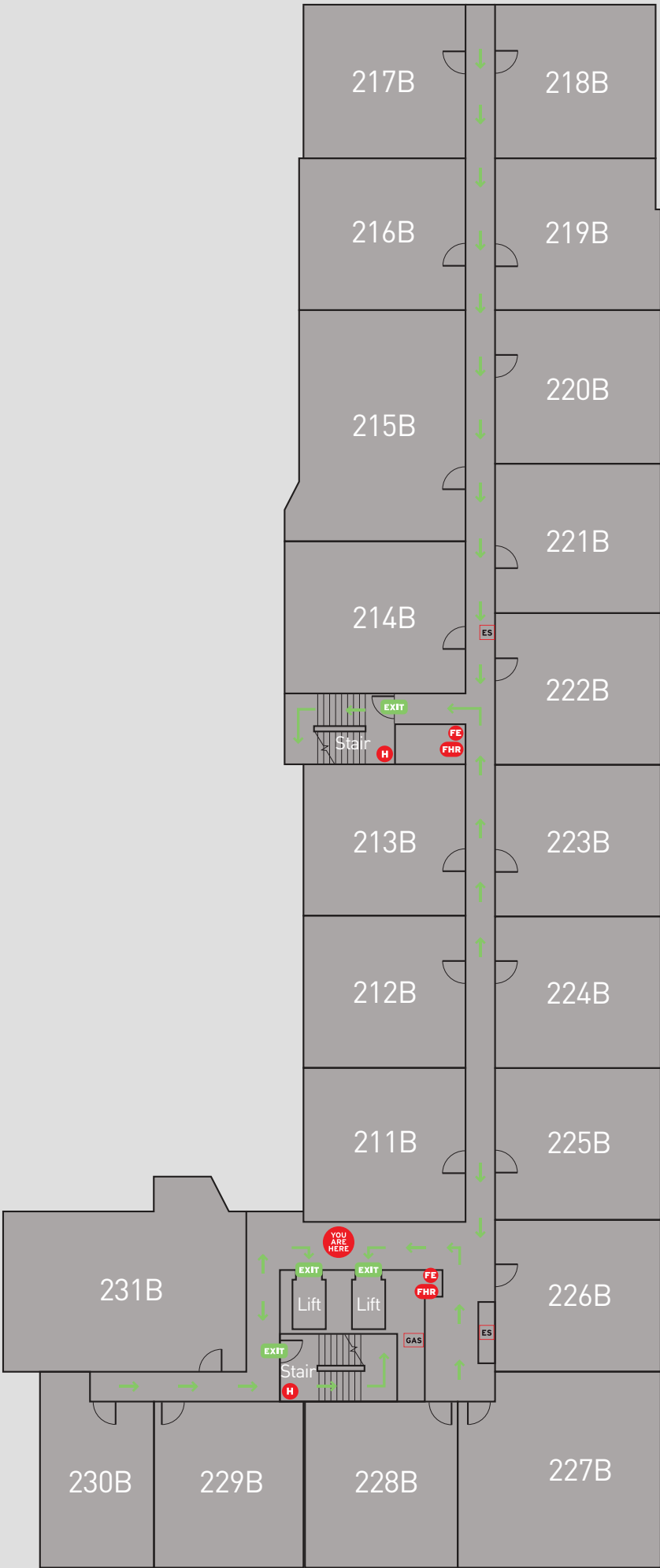
- 1 Assist anyone in immediate danger if safe to do so. Remove occupants from room of fire origin.
- 2 Close door to isolate fire and smoke.
- 3 Call Fire brigade – 000.
- 4 Attempt to fight the fire with extinguishers or hose reels, only if safe to do so.
- 5 If required or when Evacuation Tones sound, Evacuate to Assembly Area via lift and stairs.
- 6 You may use the lifts to Evacuate when the “LIFT AVAILABLE” sign is operating.
- 7 Remain at assembly Area until advised safe to return by Emergency Service. Report any persons missing to Emergency Service.

Emergency Procedures

- > On hearing the general fire alarm and the emergency alert system which will state amergency, evacuate the building.
- > You may take the lift if the “LIFT AVAILABLE” sign is operating. When the lift arrives, enter the lift and it will take you to the ground floor.
- > If the lift stops at a floor and the doors open, quickly leave the lift, move to the Exit Stair and continue the evacuation by the stair.
- > Evacuate the building immediately via the nearest stair or lift, closing all doors behind you.
- > Evacuate to designated assembly area as shown on the Site location plan.
- > Do not re-enter the building until authorised to do so by the responding Emergency service/Chief Warden.



Site Location Plan



Evacuation Diagram
Building B, Level two Plan

FE	Fire Extinguisher	EXIT	Exit	ES	Electrical Switch		Assembly Area
H	Fire Hydrant		Evacuation Route	GAS	Gas Isolation		You Are Here
FHR	Fire Hose Reel						

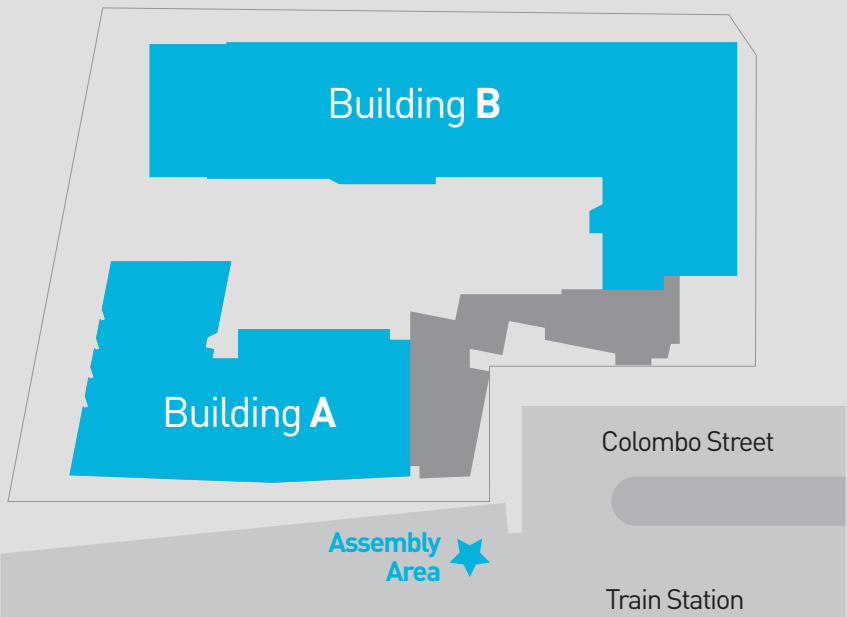
For Emergency Dial 000
1 Colombo Street, Mitcham

Standard Fire Orders

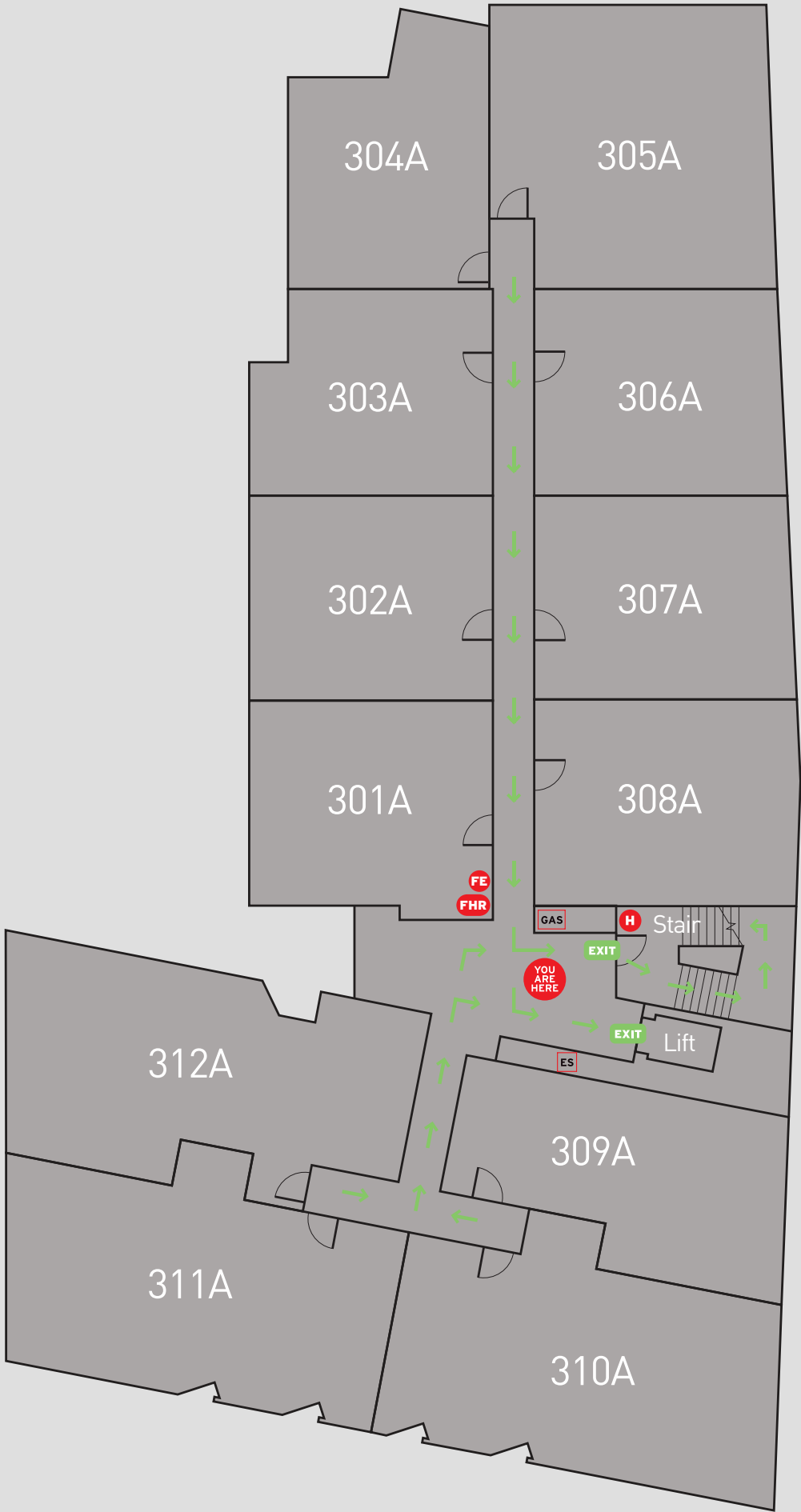
- 1 Assist anyone in immediate danger if safe to do so. Remove occupants from room of fire origin.
- 2 Close door to isolate fire and smoke.
- 3 Call Fire brigade – 000.
- 4 Attempt to fight the fire with extinguishers or hose reels, only if safe to do so.
- 5 If required or when Evacuation Tones sound, Evacuate to Assembly Area via lift and stairs.
- 6 You may use the lifts to Evacuate when the “LIFT AVAILABLE” sign is operating.
- 7 Remain at assembly Area until advised safe to return by Emergency Service. Report any persons missing to Emergency Service.

Emergency Procedures

- > On hearing the general fire alarm and the emergency alert system which will state amergency, evacuate the building.
- > You may take the lift if the “LIFT AVAILABLE” sign is operating. When the lift arrives, enter the lift and it will take you to the ground floor.
- > If the lift stops at a floor and the doors open, quickly leave the lift, move to the Exit Stair and continue the evacuation by the stair.
- > Evacuate the building immediately via the nearest stair or lift, closing all doors behind you.
- > Evacuate to designated assembly area as shown on the Site location plan.
- > Do not re-enter the building until authorised to do so by the responding Emergency service/Chief Warden.



Site Location Plan



Evacuation Diagram

Building A, Level three Plan

FE	Fire Extinguisher	EXIT	Exit	ES	Electrical Switch		Assembly Area
H	Fire Hydrant		Evacuation Route	GAS	Gas Isolation		You Are Here
FHR	Fire Hose Reel						

For Emergency Dial 000

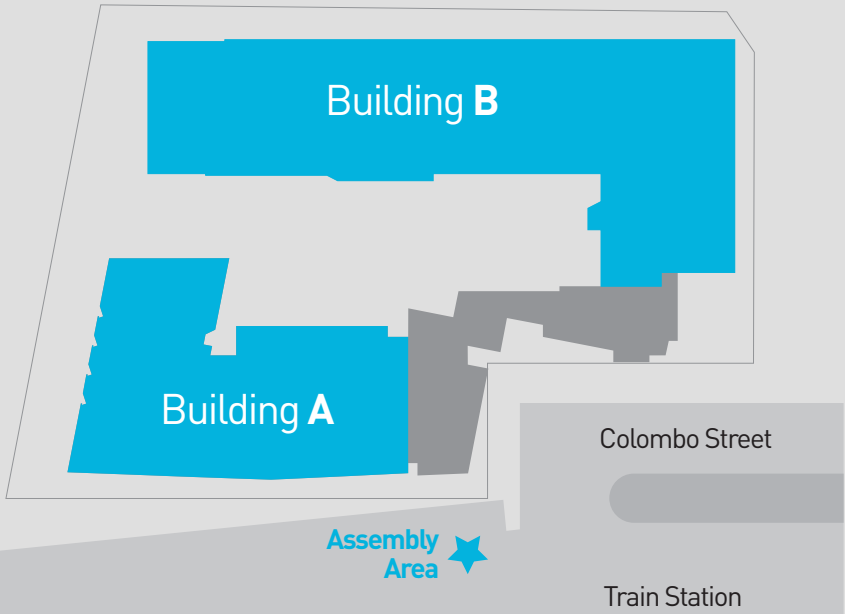
1 Colombo Street, Mitcham

Standard Fire Orders

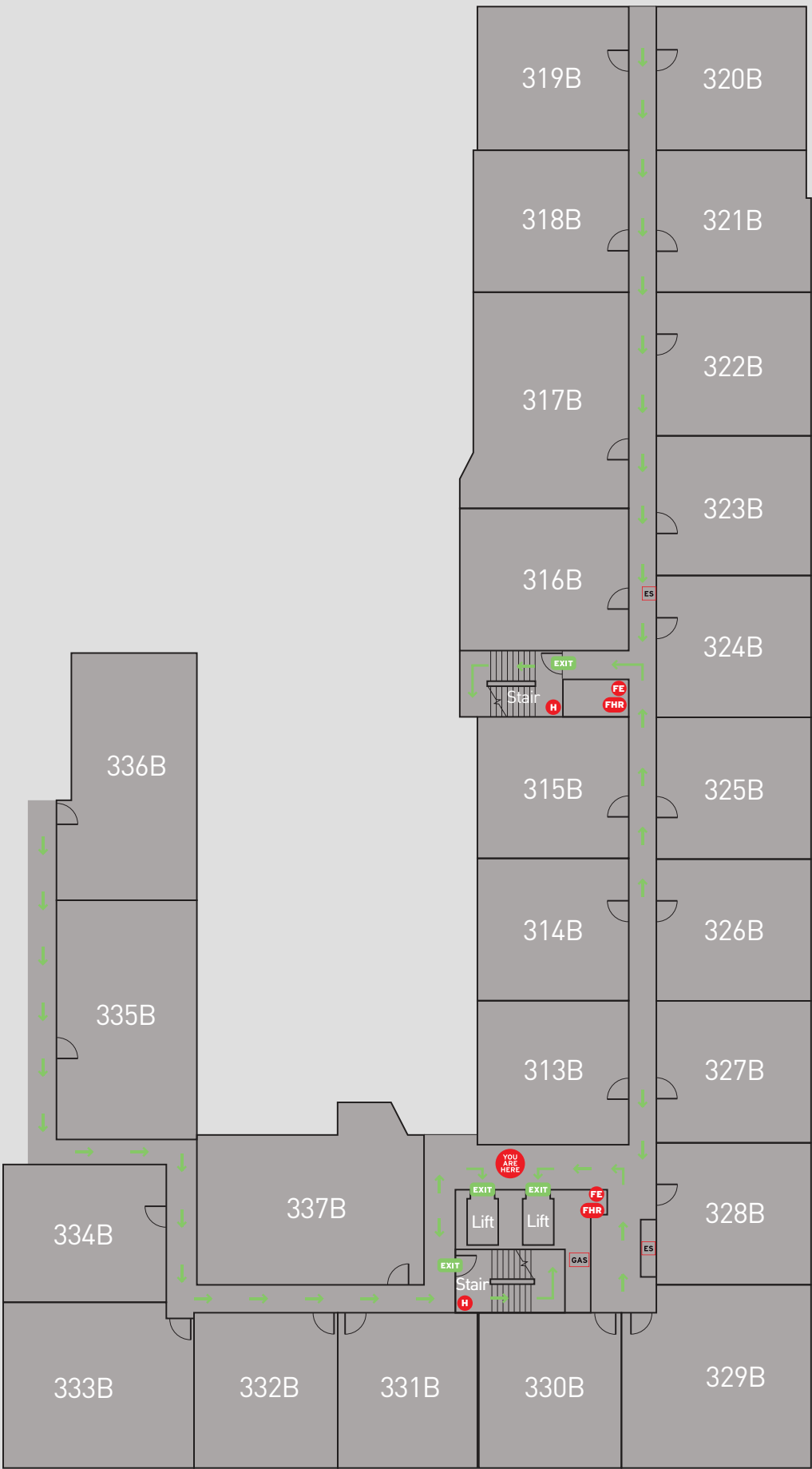
- 1 Assist anyone in immediate danger if safe to do so. Remove occupants from room of fire origin.
- 2 Close door to isolate fire and smoke.
- 3 Call Fire brigade – 000.
- 4 Attempt to fight the fire with extinguishers or hose reels, only if safe to do so.
- 5 If required or when Evacuation Tones sound, Evacuate to Assembly Area via lift and stairs.
- 6 You may use the lifts to Evacuate when the “LIFT AVAILABLE” sign is operating.
- 7 Remain at assembly Area until advised safe to return by Emergency Service. Report any persons missing to Emergency Service.

Emergency Procedures

- > On hearing the general fire alarm and the emergency alert system which will state amergency, evacuate the building.
- > You may take the lift if the “LIFT AVAILABLE” sign is operating. When the lift arrives, enter the lift and it will take you to the ground floor.
- > If the lift stops at a floor and the doors open, quickly leave the lift, move to the Exit Stair and continue the evacuation by the stair.
- > Evacuate the building immediately via the nearest stair or lift, closing all doors behind you.
- > Evacuate to designated assembly area as shown on the Site location plan.
- > Do not re-enter the building until authorised to do so by the responding Emergency service/Chief Warden.



Site Location Plan



Evacuation Diagram

Building B, Level three Plan

FE	Fire Extinguisher	EXIT	Exit	ES	Electrical Switch		Assembly Area
H	Fire Hydrant		Evacuation Route	GAS	Gas Isolation	YOU ARE HERE	You Are Here
FHR	Fire Hose Reel						

For Emergency Dial 000

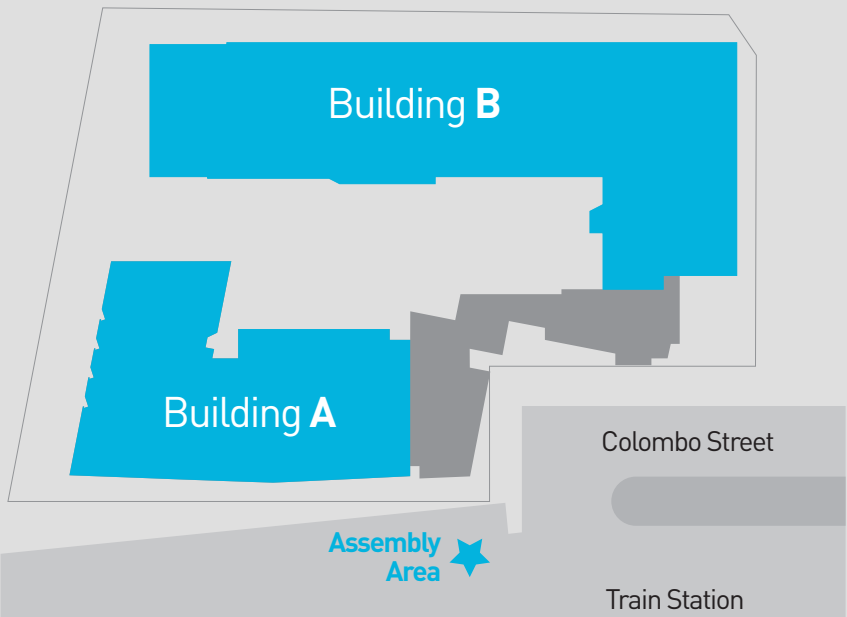
1 Colombo Street, Mitcham

Standard Fire Orders

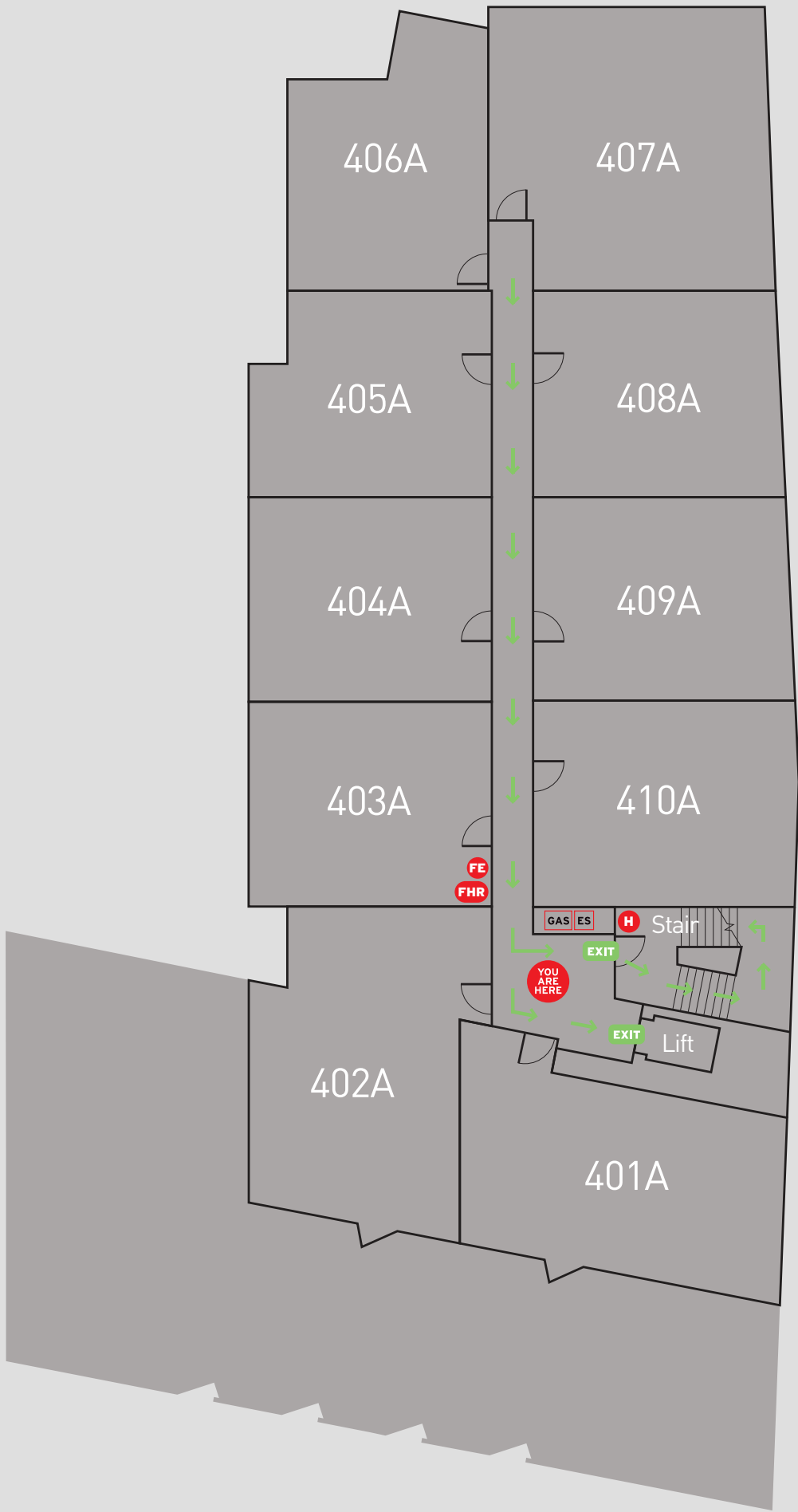
- 1 Assist anyone in immediate danger if safe to do so. Remove occupants from room of fire origin.
- 2 Close door to isolate fire and smoke.
- 3 Call Fire brigade – 000.
- 4 Attempt to fight the fire with extinguishers or hose reels, only if safe to do so.
- 5 If required or when Evacuation Tones sound, Evacuate to Assembly Area via lift and stairs.
- 6 You may use the lifts to Evacuate when the “LIFT AVAILABLE” sign is operating.
- 7 Remain at assembly Area until advised safe to return by Emergency Service. Report any persons missing to Emergency Service.

Emergency Procedures

- > On hearing the general fire alarm and the emergency alert system which will state amergency, evacuate the building.
- > You may take the lift if the “LIFT AVAILABLE” sign is operating. When the lift arrives, enter the lift and it will take you to the ground floor.
- > If the lift stops at a floor and the doors open, quickly leave the lift, move to the Exit Stair and continue the evacuation by the stair.
- > Evacuate the building immediately via the nearest stair or lift, closing all doors behind you.
- > Evacuate to designated assembly area as shown on the Site location plan.
- > Do not re-enter the building until authorised to do so by the responding Emergency service/Chief Warden.



Site Location Plan



Evacuation Diagram

Building A, Level four Plan

FE	Fire Extinguisher	EXIT	Exit	ES	Electrical Switch		Assembly Area
H	Fire Hydrant		Evacuation Route	GAS	Gas Isolation		You Are Here
FHR	Fire Hose Reel						

For Emergency Dial 000

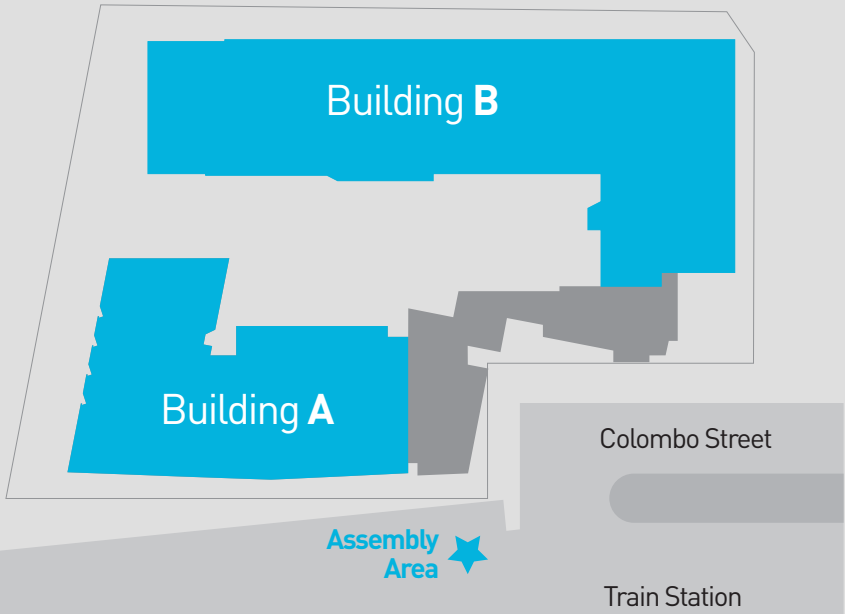
1 Colombo Street, Mitcham

Standard Fire Orders

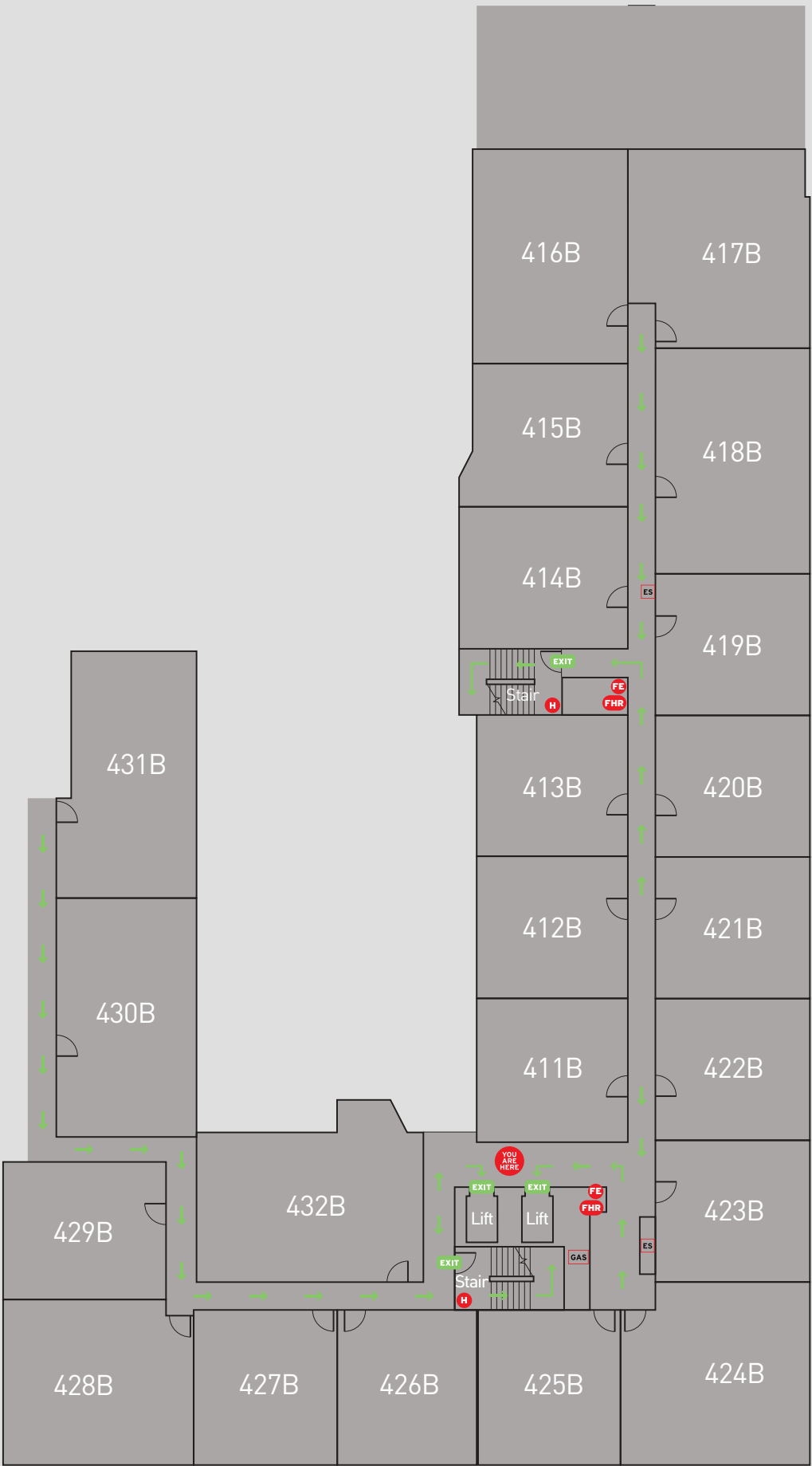
- 1 Assist anyone in immediate danger if safe to do so. Remove occupants from room of fire origin.
- 2 Close door to isolate fire and smoke.
- 3 Call Fire brigade – 000.
- 4 Attempt to fight the fire with extinguishers or hose reels, only if safe to do so.
- 5 If required or when Evacuation Tones sound, Evacuate to Assembly Area via lift and stairs.
- 6 You may use the lifts to Evacuate when the “LIFT AVAILABLE” sign is operating.
- 7 Remain at assembly Area until advised safe to return by Emergency Service. Report any persons missing to Emergency Service.

Emergency Procedures

- > On hearing the general fire alarm and the emergency alert system which will state amergency, evacuate the building.
- > You may take the lift if the “LIFT AVAILABLE” sign is operating. When the lift arrives, enter the lift and it will take you to the ground floor.
- > If the lift stops at a floor and the doors open, quickly leave the lift, move to the Exit Stair and continue the evacuation by the stair.
- > Evacuate the building immediately via the nearest stair or lift, closing all doors behind you.
- > Evacuate to designated assembly area as shown on the Site location plan.
- > Do not re-enter the building until authorised to do so by the responding Emergency service/Chief Warden.



Site Location Plan



Evacuation Diagram

Building B, Level four Plan

FE	Fire Extinguisher	EXIT	Exit	ES	Electrical Switch		Assembly Area
H	Fire Hydrant		Evacuation Route	GAS	Gas Isolation	YOU ARE HERE	You Are Here
FHR	Fire Hose Reel						

For Emergency Dial 000

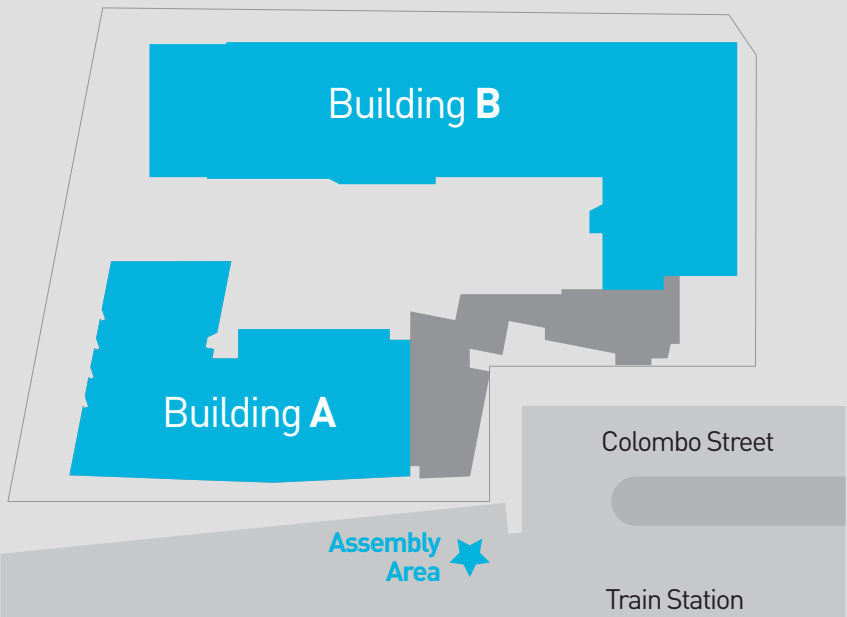
1 Colombo Street, Mitcham

Standard Fire Orders

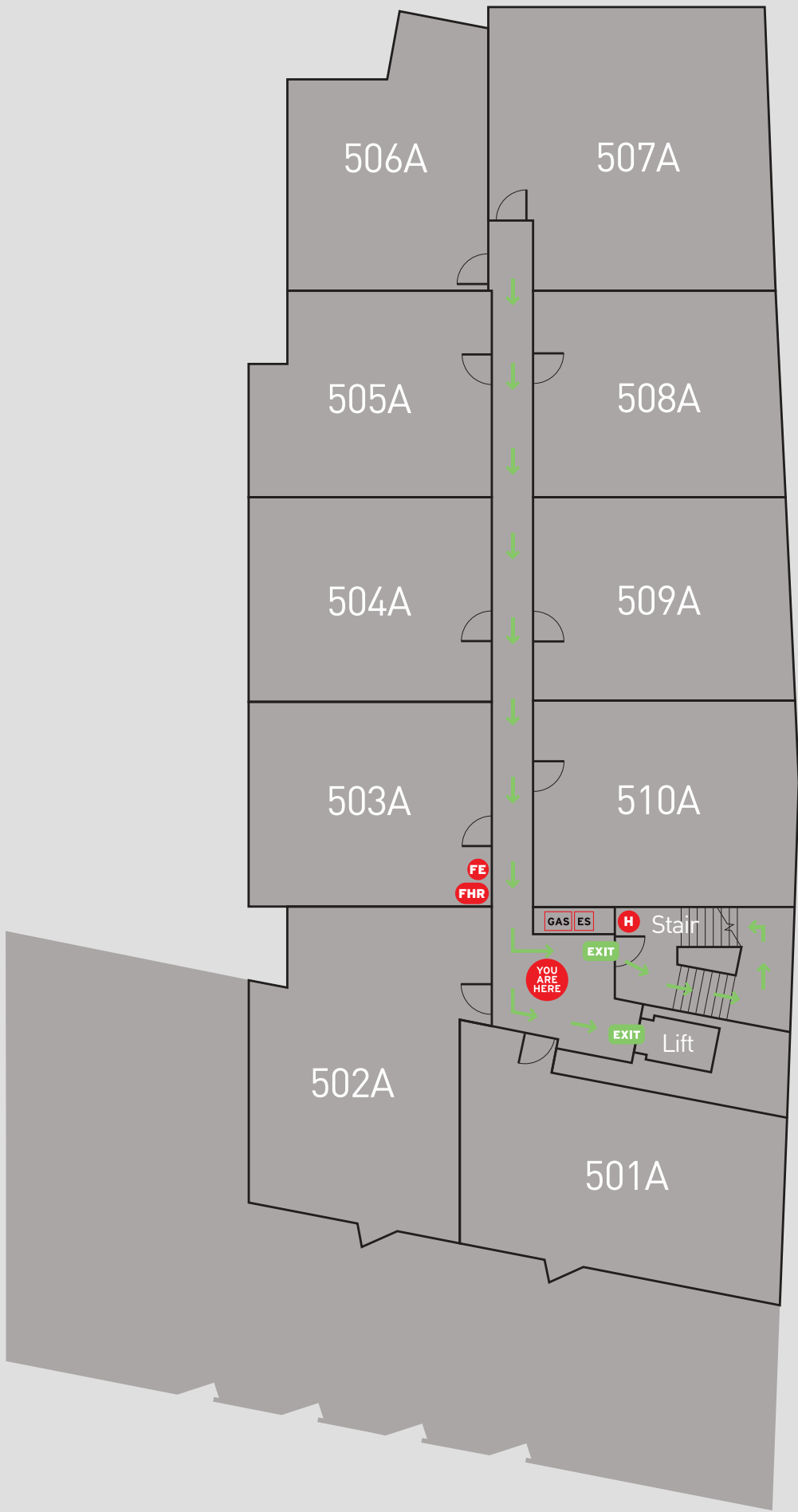
- 1 Assist anyone in immediate danger if safe to do so. Remove occupants from room of fire origin.
- 2 Close door to isolate fire and smoke.
- 3 Call Fire brigade – 000.
- 4 Attempt to fight the fire with extinguishers or hose reels, only if safe to do so.
- 5 If required or when Evacuation Tones sound, Evacuate to Assembly Area via lift and stairs.
- 6 You may use the lifts to Evacuate when the “LIFT AVAILABLE” sign is operating.
- 7 Remain at assembly Area until advised safe to return by Emergency Service. Report any persons missing to Emergency Service.

Emergency Procedures

- > On hearing the general fire alarm and the emergency alert system which will state amergency, evacuate the building.
- > You may take the lift if the “LIFT AVAILABLE” sign is operating. When the lift arrives, enter the lift and it will take you to the ground floor.
- > If the lift stops at a floor and the doors open, quickly leave the lift, move to the Exit Stair and continue the evacuation by the stair.
- > Evacuate the building immediately via the nearest stair or lift, closing all doors behind you.
- > Evacuate to designated assembly area as shown on the Site location plan.
- > Do not re-enter the building until authorised to do so by the responding Emergency service/Chief Warden.



Site Location Plan



Evacuation Diagram
Building A, Level five Plan

FE	Fire Extinguisher	EXIT	Exit	ES	Electrical Switch		Assembly Area
H	Fire Hydrant		Evacuation Route	GAS	Gas Isolation		You Are Here
FHR	Fire Hose Reel						

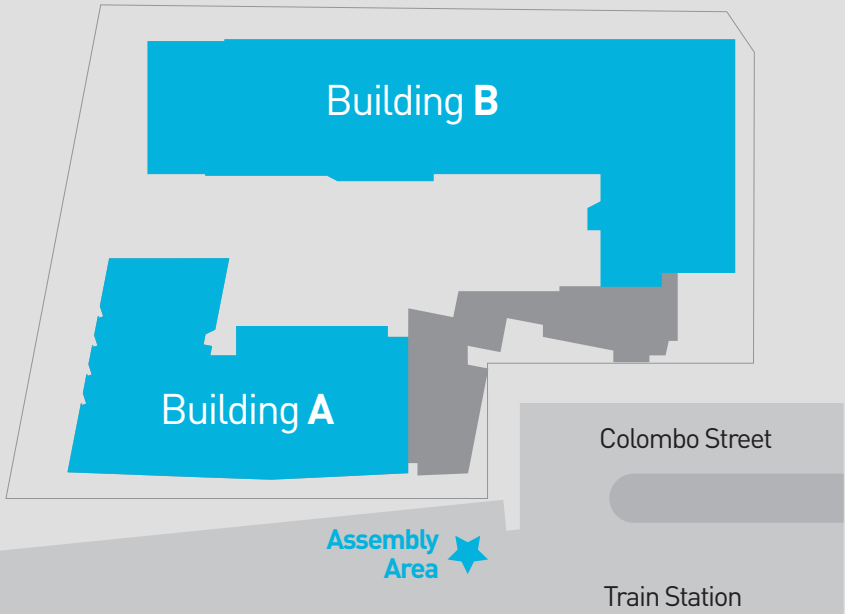
For Emergency Dial 000
1 Colombo Street, Mitcham

Standard Fire Orders

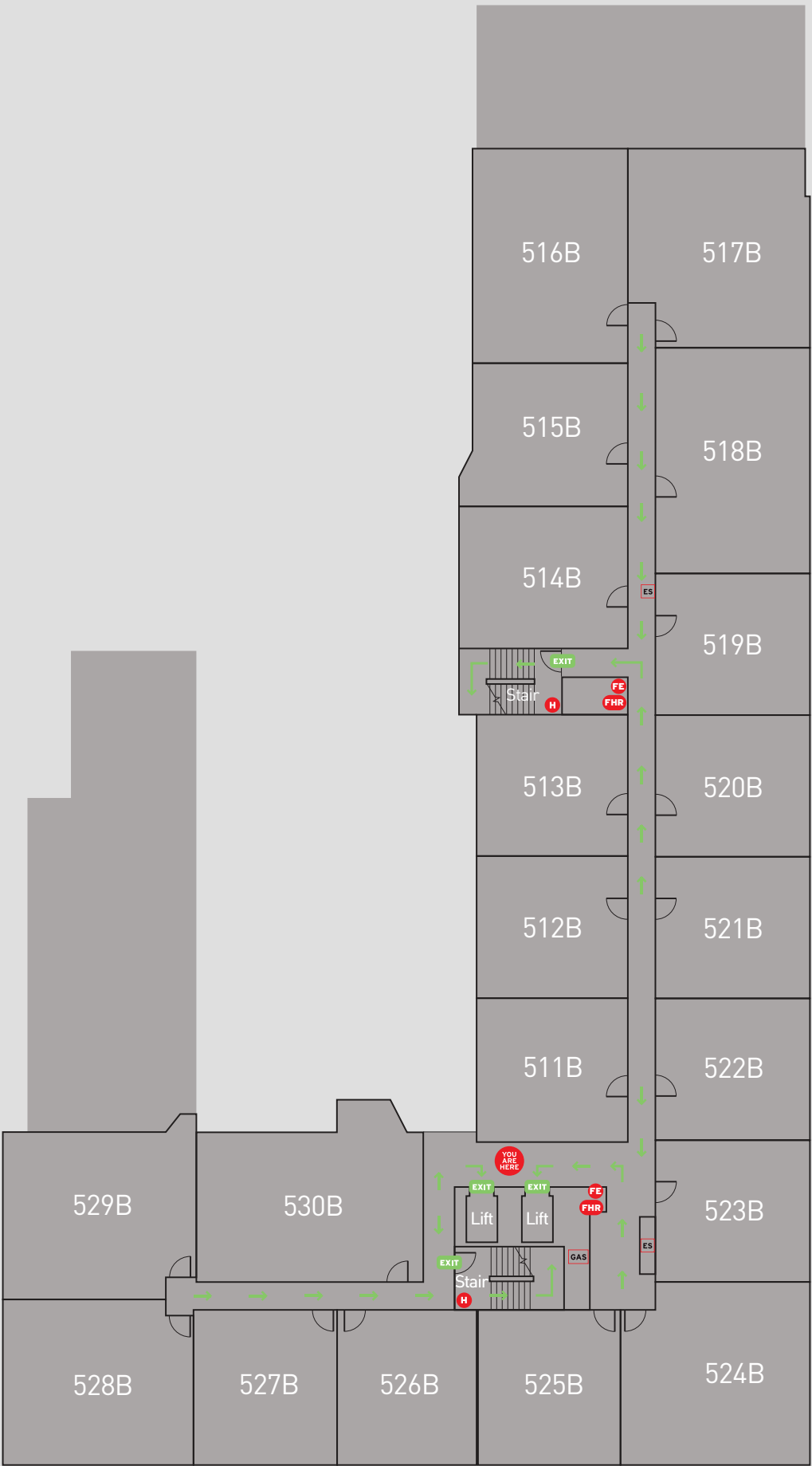
- 1 Assist anyone in immediate danger if safe to do so. Remove occupants from room of fire origin.
- 2 Close door to isolate fire and smoke.
- 3 Call Fire brigade – 000.
- 4 Attempt to fight the fire with extinguishers or hose reels, only if safe to do so.
- 5 If required or when Evacuation Tones sound, Evacuate to Assembly Area via lift and stairs.
- 6 You may use the lifts to Evacuate when the “LIFT AVAILABLE” sign is operating.
- 7 Remain at assembly Area until advised safe to return by Emergency Service. Report any persons missing to Emergency Service.

Emergency Procedures

- > On hearing the general fire alarm and the emergency alert system which will state amergency, evacuate the building.
- > You may take the lift if the “LIFT AVAILABLE” sign is operating. When the lift arrives, enter the lift and it will take you to the ground floor.
- > If the lift stops at a floor and the doors open, quickly leave the lift, move to the Exit Stair and continue the evacuation by the stair.
- > Evacuate the building immediately via the nearest stair or lift, closing all doors behind you.
- > Evacuate to designated assembly area as shown on the Site location plan.
- > Do not re-enter the building until authorised to do so by the responding Emergency service/Chief Warden.



Site Location Plan



Evacuation Diagram
Building B, Level five Plan

FE	Fire Extinguisher	EXIT	Exit	ES	Electrical Switch		Assembly Area
H	Fire Hydrant		Evacuation Route	GAS	Gas Isolation		You Are Here
FHR	Fire Hose Reel						

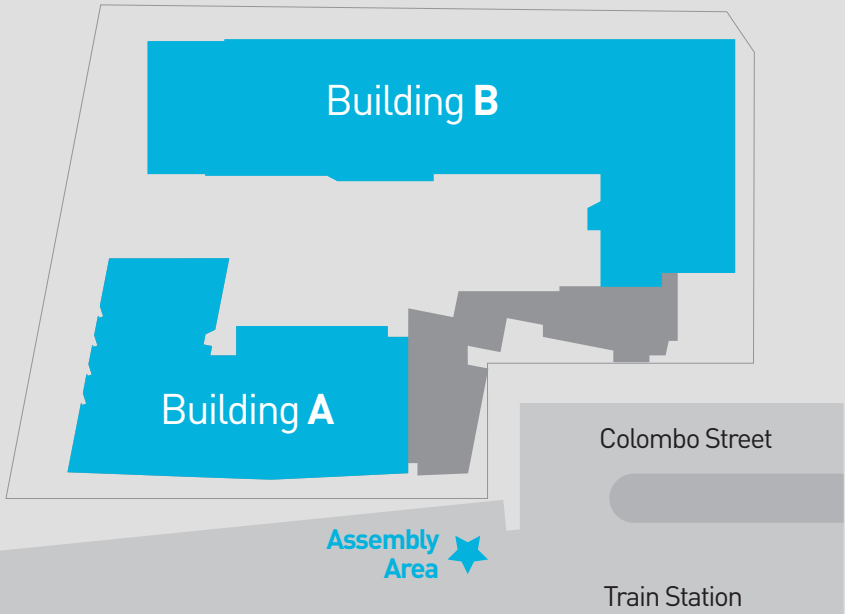
For Emergency Dial 000
1 Colombo Street, Mitcham

Standard Fire Orders

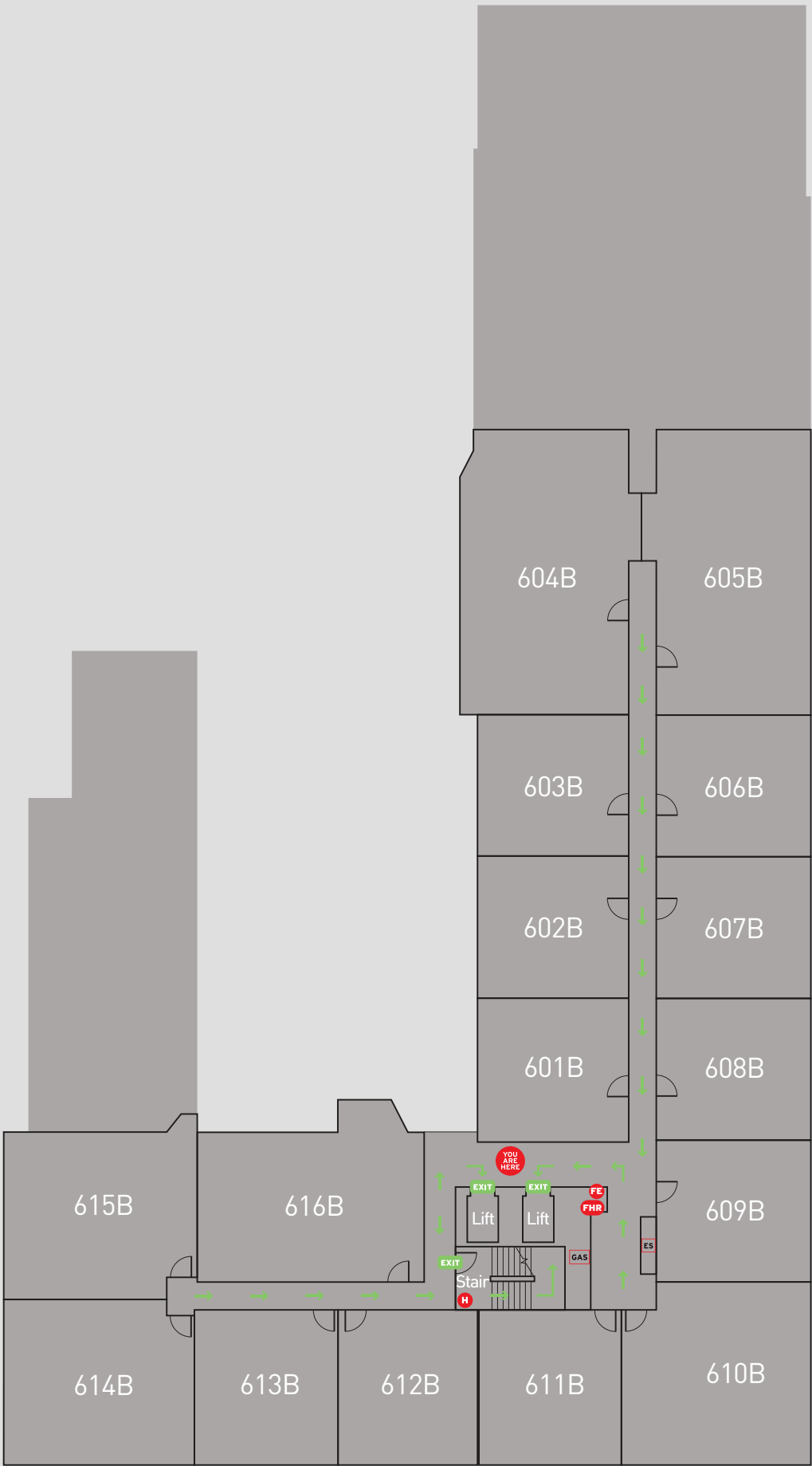
- 1 Assist anyone in immediate danger if safe to do so. Remove occupants from room of fire origin.
- 2 Close door to isolate fire and smoke.
- 3 Call Fire brigade – 000.
- 4 Attempt to fight the fire with extinguishers or hose reels, only if safe to do so.
- 5 If required or when Evacuation Tones sound, Evacuate to Assembly Area via lift and stairs.
- 6 You may use the lifts to Evacuate when the “LIFT AVAILABLE” sign is operating.
- 7 Remain at assembly Area until advised safe to return by Emergency Service. Report any persons missing to Emergency Service.

Emergency Procedures

- > On hearing the general fire alarm and the emergency alert system which will state amergency, evacuate the building.
- > You may take the lift if the “LIFT AVAILABLE” sign is operating. When the lift arrives, enter the lift and it will take you to the ground floor.
- > If the lift stops at a floor and the doors open, quickly leave the lift, move to the Exit Stair and continue the evacuation by the stair.
- > Evacuate the building immediately via the nearest stair or lift, closing all doors behind you.
- > Evacuate to designated assembly area as shown on the Site location plan.
- > Do not re-enter the building until authorised to do so by the responding Emergency service/Chief Warden.



Site Location Plan



Evacuation Diagram
Building B, Level six Plan

FE	Fire Extinguisher	EXIT	Exit	ES	Electrical Switch		Assembly Area
H	Fire Hydrant		Evacuation Route	GAS	Gas Isolation		You Are Here
FHR	Fire Hose Reel						

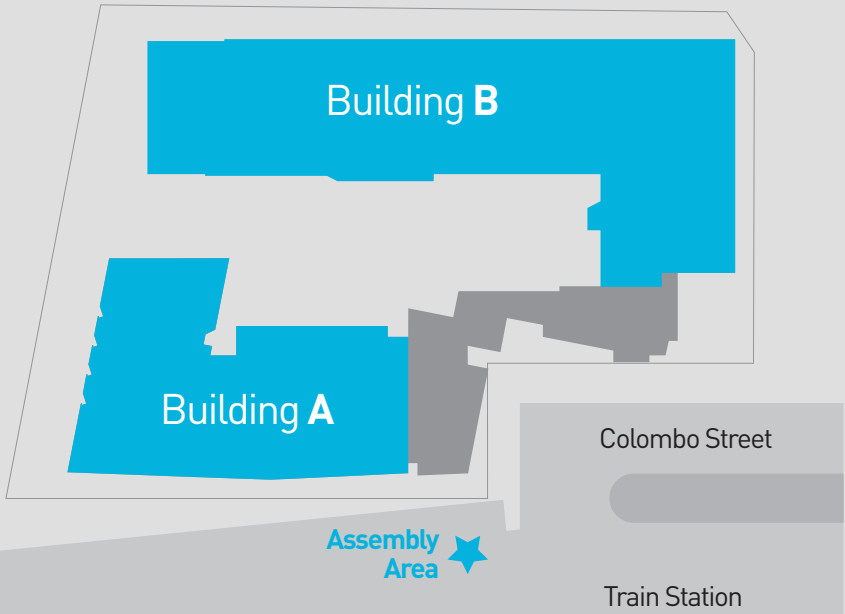
For Emergency Dial 000
1 Colombo Street, Mitcham

Standard Fire Orders

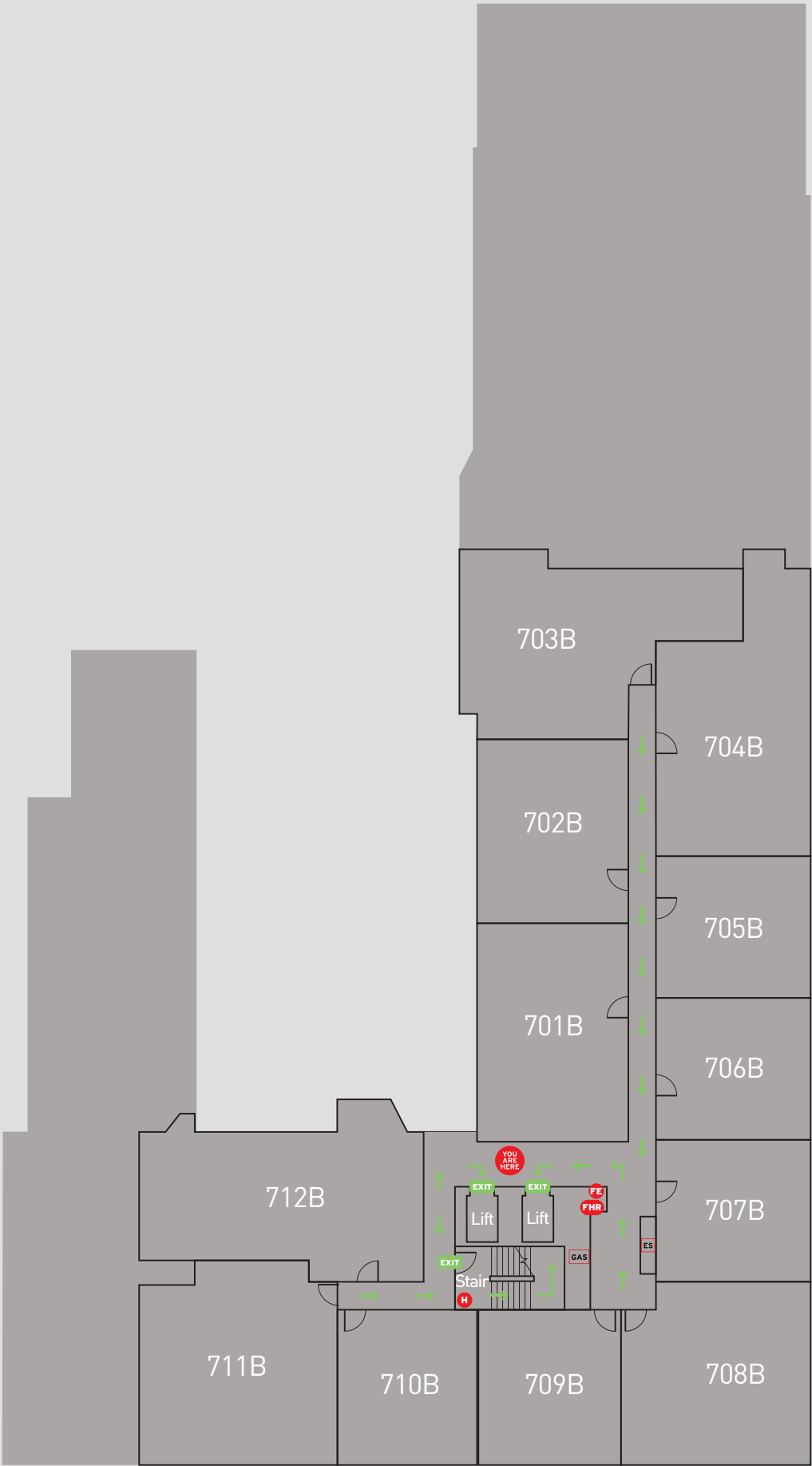
- 1 Assist anyone in immediate danger if safe to do so. Remove occupants from room of fire origin.
- 2 Close door to isolate fire and smoke.
- 3 Call Fire brigade – 000.
- 4 Attempt to fight the fire with extinguishers or hose reels, only if safe to do so.
- 5 If required or when Evacuation Tones sound, Evacuate to Assembly Area via lift and stairs.
- 6 You may use the lifts to Evacuate when the “LIFT AVAILABLE” sign is operating.
- 7 Remain at assembly Area until advised safe to return by Emergency Service. Report any persons missing to Emergency Service.

Emergency Procedures

- > On hearing the general fire alarm and the emergency alert system which will state amergency, evacuate the building.
- > You may take the lift if the “LIFT AVAILABLE” sign is operating. When the lift arrives, enter the lift and it will take you to the ground floor.
- > If the lift stops at a floor and the doors open, quickly leave the lift, move to the Exit Stair and continue the evacuation by the stair.
- > Evacuate the building immediately via the nearest stair or lift, closing all doors behind you.
- > Evacuate to designated assembly area as shown on the Site location plan.
- > Do not re-enter the building until authorised to do so by the responding Emergency service/Chief Warden.



Site Location Plan



Evacuation Diagram
Building B, Level seven Plan

Fire Extinguisher	Exit	Electrical Switch	Assembly Area
Fire Hydrant	Evacuation Route	Gas Isolation	You Are Here
Fire Hose Reel			

For Emergency Dial 000
1 Colombo Street, Mitcham