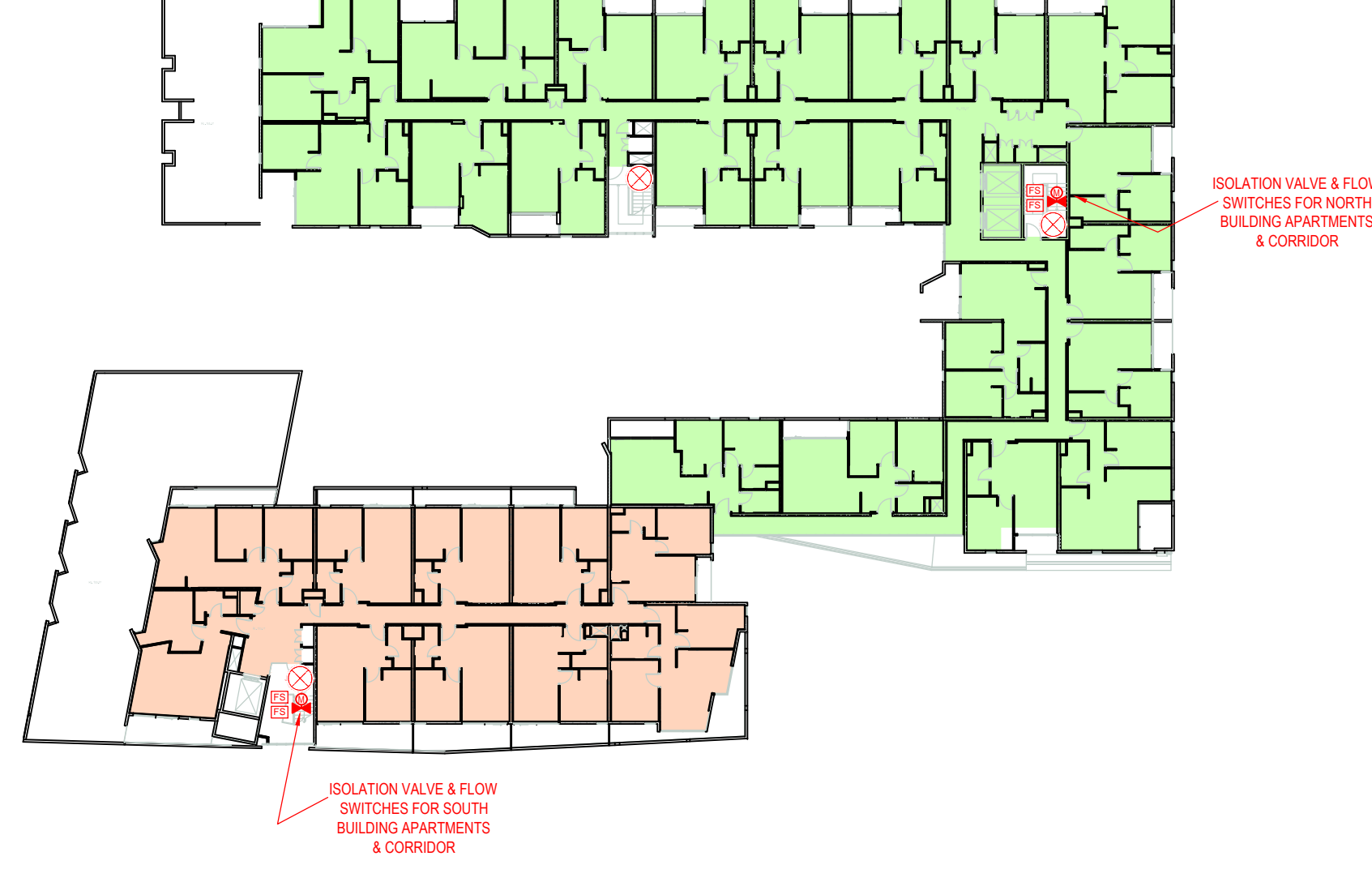
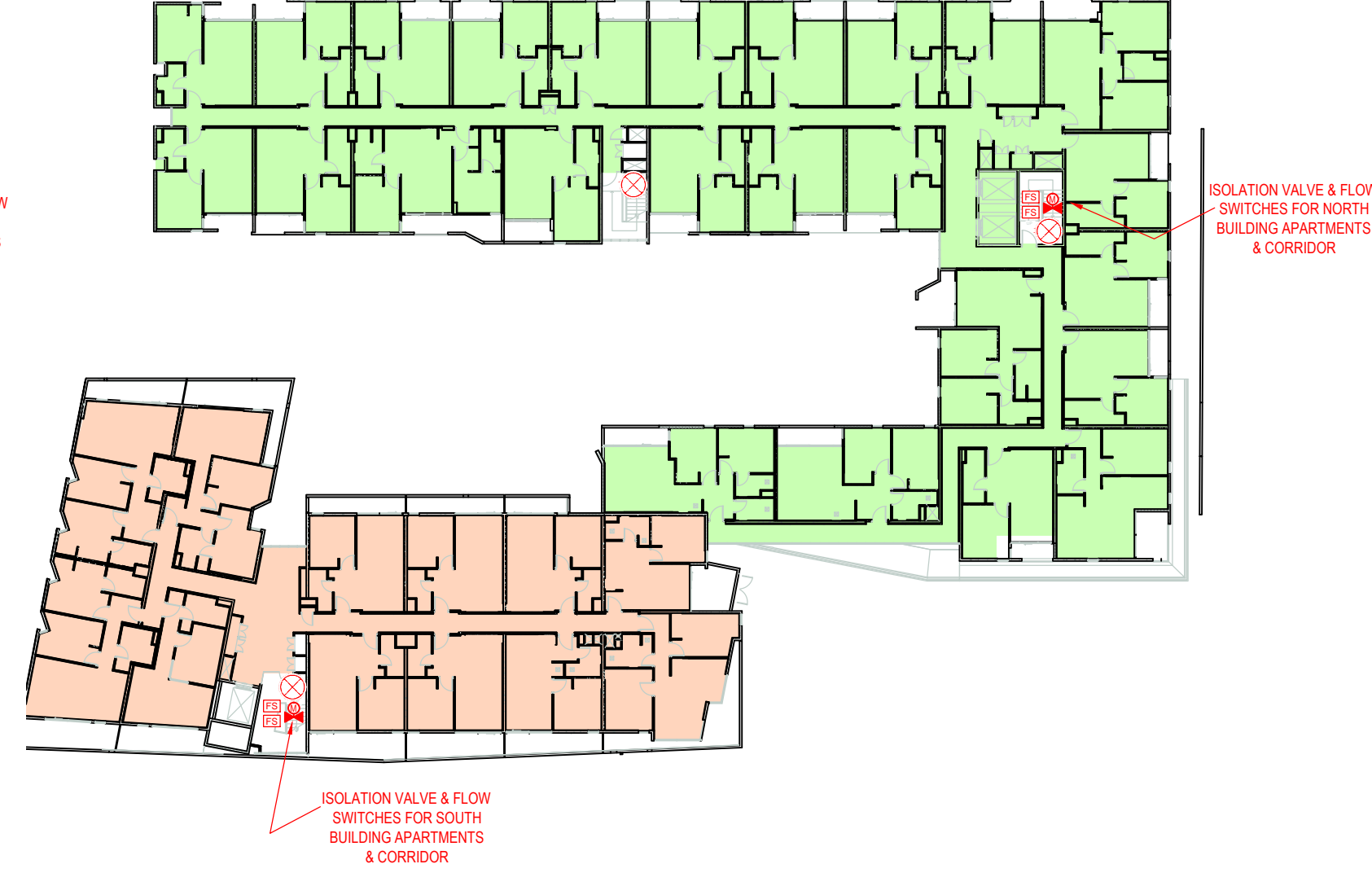
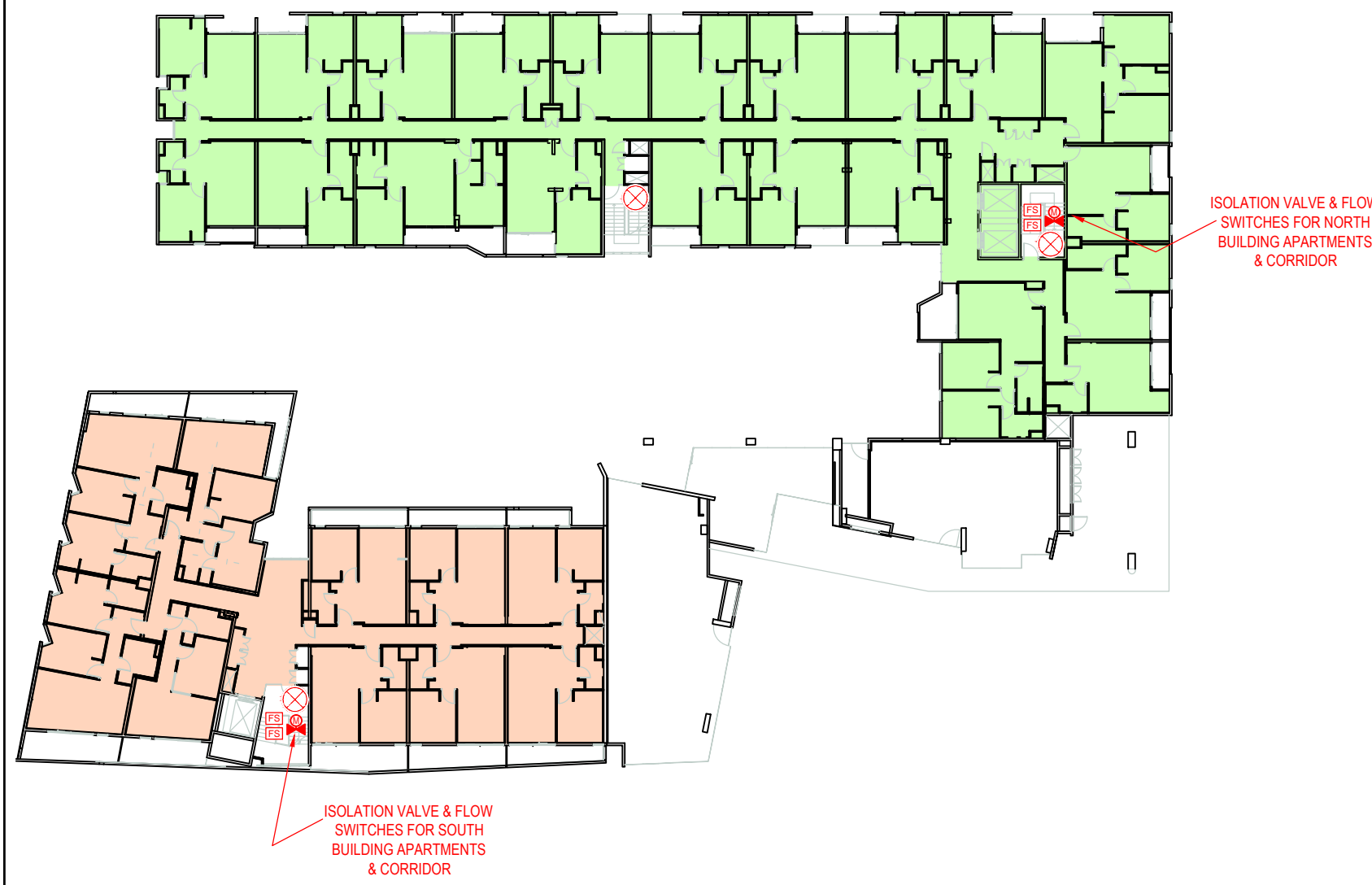


LOWER BASEMENT

UPPER BASEMENT

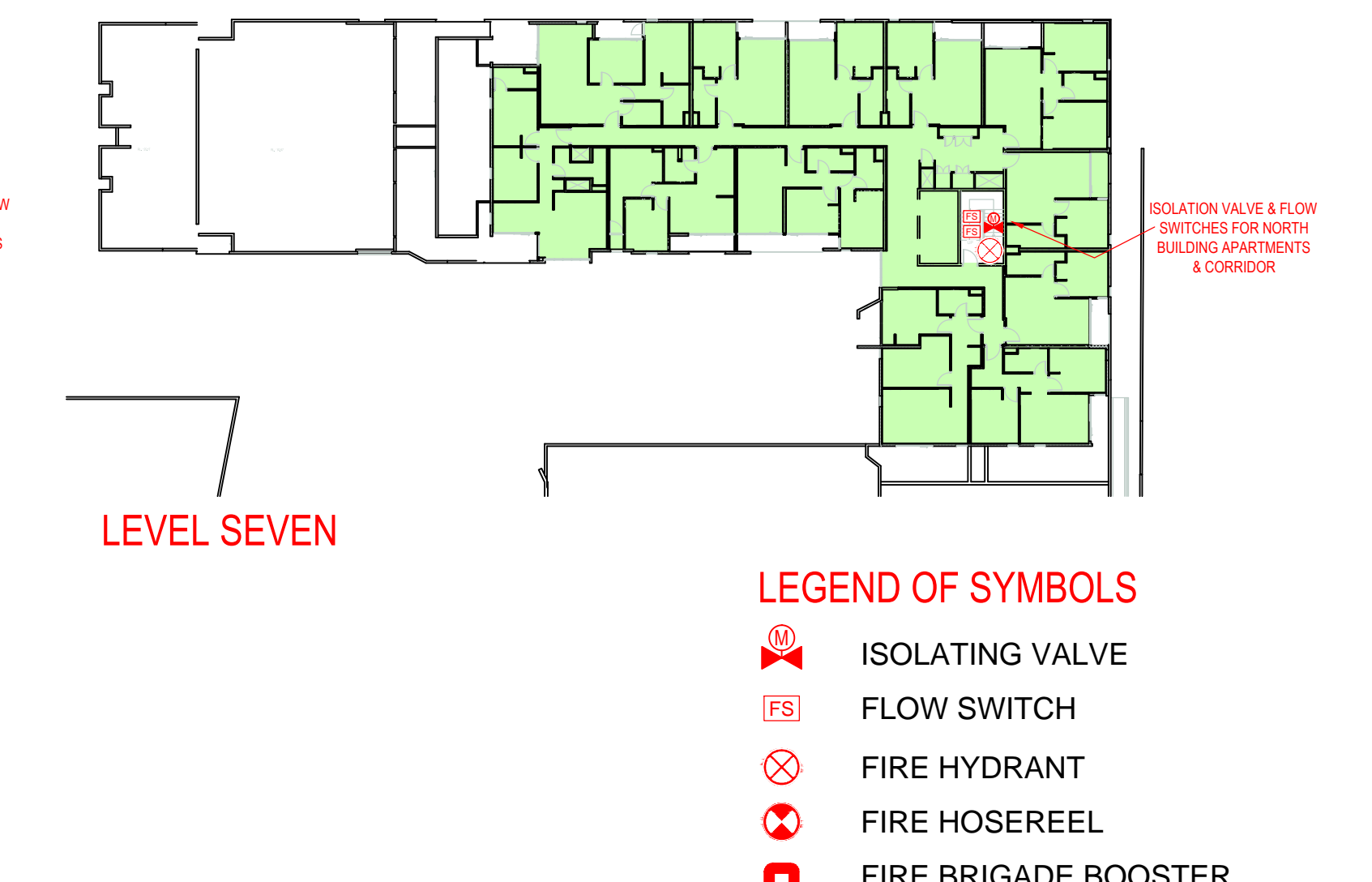
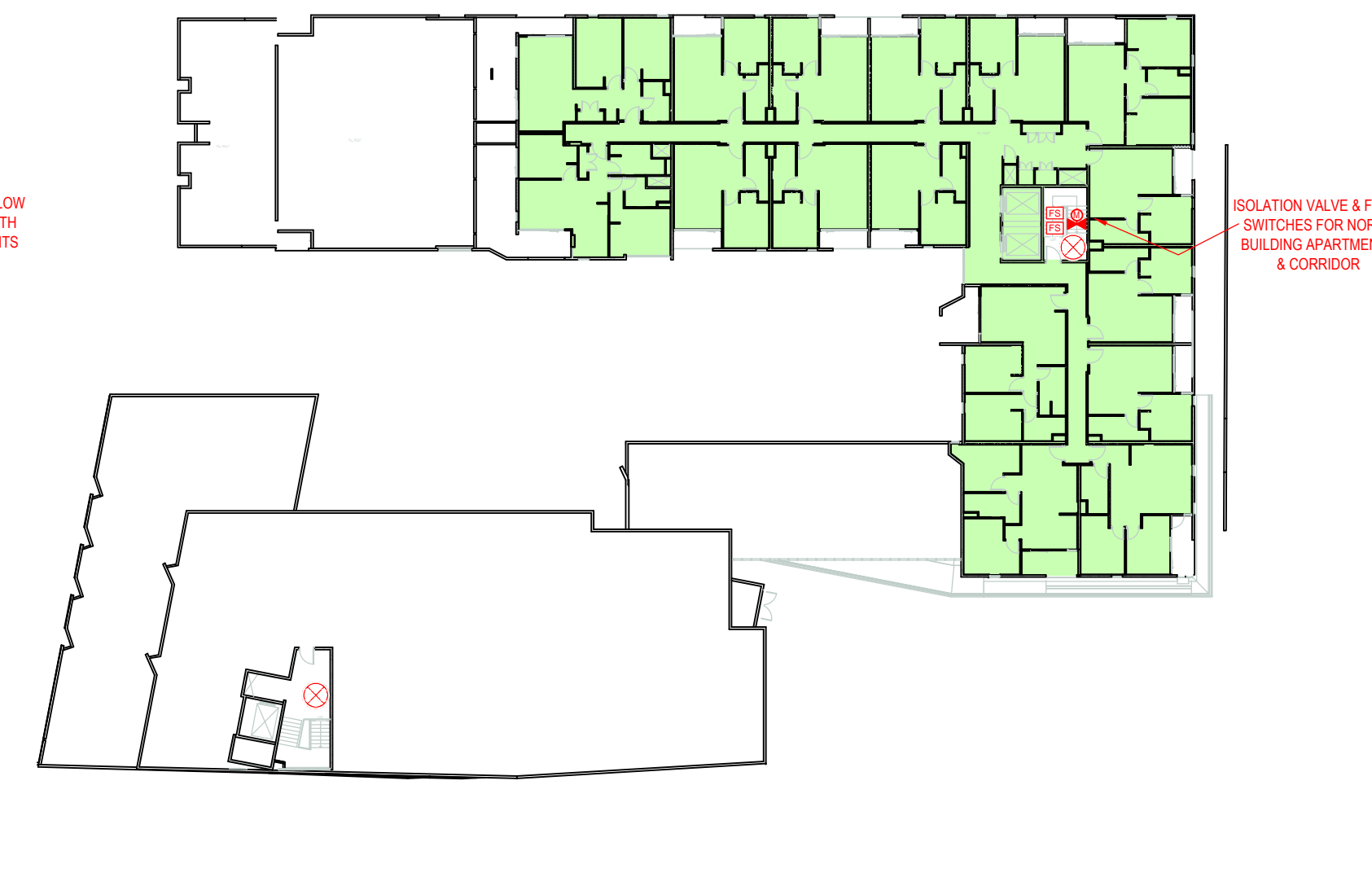
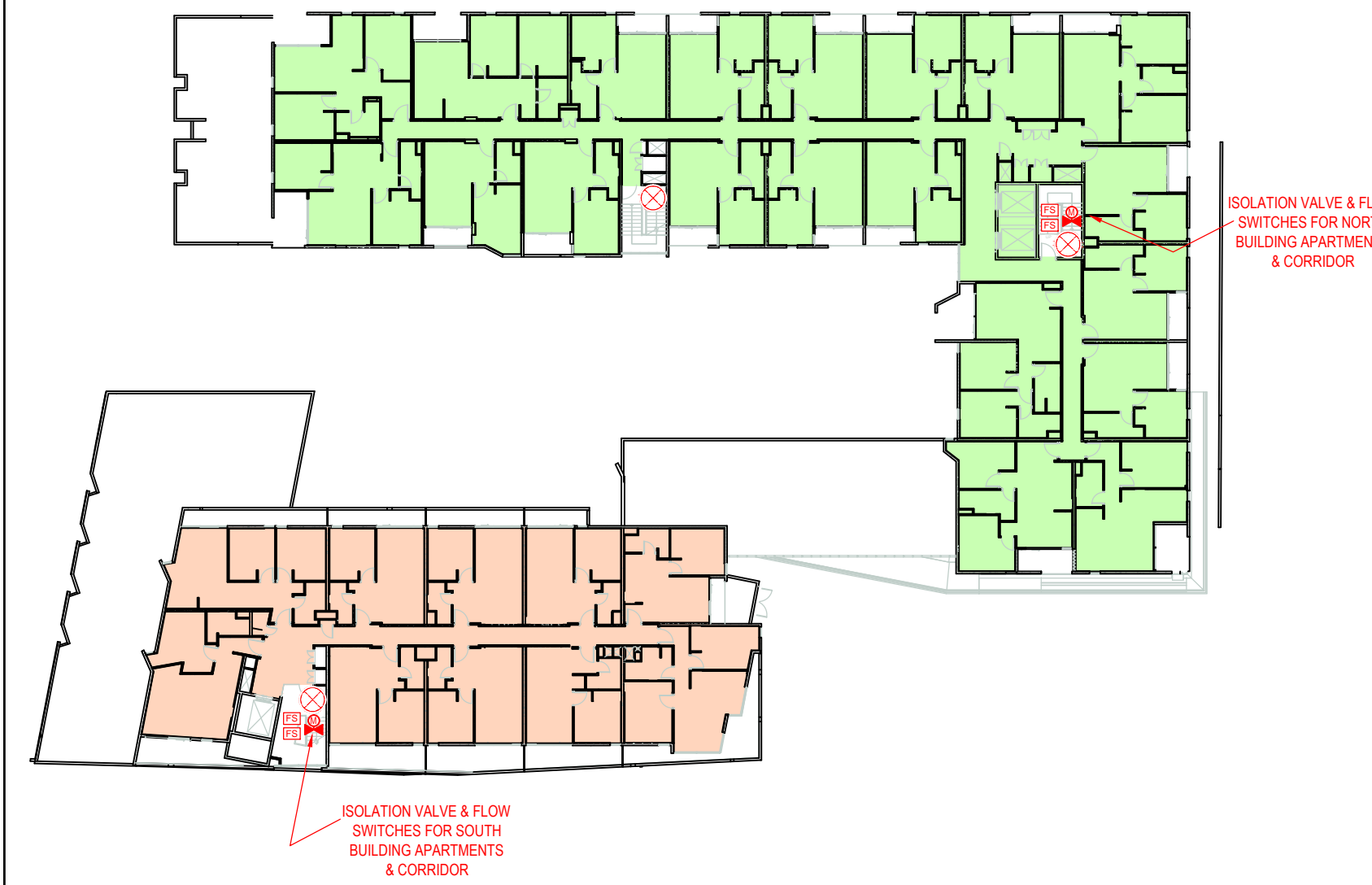
LEVEL ONE



LEVEL TWO

LEVEL THREE

LEVEL FOUR



LEVEL FIVE

LEVEL SIX

LEVEL SEVEN

SPRINKLER SYSTEM

HAZARD CLASSIFICATION:

CARPARK (UPPER & LOWER BASEMENTS) – HYBRID SYSTEM – 5mm/min OVER 144m²
RETAIL (LEVEL 1) – ORDINARY HAZARD 3 – 5mm/min OVER 216m²
APARTMENTS (NORTH BUILDING LEVELS 1-7) – RESIDENTIAL – 4 x RES SPRINKLERS
(SOUTH BUILDING LEVELS 1-5) – RESIDENTIAL – 4 x RES SPRINKLERS
HIGHEST SPRINKLER:- 22.5M ABOVE ALARM VALVE

HYDRANT SYSTEM

2off HYDRANTS FLOWING 700kPa @ 300 L/min

WATER SUPPLY

- SPRINKLERS & HYDRANTS FED VIA COMBINED PUMPS FED FROM STATIC WATER SUPPLY TANKS
- TANK INFILL VIA TOWNS MAIN FEED LOCATED IN COLUMBO ST

LEGEND OF SYMBOLS

- ISOLATING VALVE
- FLOW SWITCH
- FIRE HYDRANT
- FIRE HOSEREEL
- FIRE BRIGADE BOOSTER
- FIRE INDICATOR PANEL
- OCCUPANT WARNING PANEL

PUMP DETAILS

ELECTRIC PUMP - DUTY:

UNIT SERIAL No: 225322 F-1
COMMISSIONED: OCTOBER 2012

PUMP DETAILS
MAKE: SOUTHERN CROSS
MODEL: ISO 125X80-250
IMPELLER DIAM: 278

ELECTRIC DRIVER DETAILS
MAKE: WEG
MODEL: D280S/M
POWER: 90 kW
SPEED: 2950 RPM

DIESEL PUMP - STANDBY:

UNIT SERIAL No: 225322 F-2
COMMISSIONED: OCTOBER 2012

PUMP DETAILS
MAKE: SOUTHERN CROSS
MODEL: ISO 125X80-315
IMPELLER DIAM: 342

DIESEL DRIVER DETAILS
MAKE: W&C
MODEL: CD6102G-7-S-HC
POWER: 95 kW
SPEED: 3000 RPM

SPECIFIED PUMP DUTY:
950 L/min @ 1050 kPa
2250 L/min @ 820 kPa

ELECTRIC PUMP No. 1 (DUTY) - CUT IN: 650 kPa
DIESEL PUMP No. 2 (STANDBY) - CUT IN: 750 kPa

SPRINKLER JACKING PUMP - CUT IN: 900 kPa
SPRINKLER JACKING PUMP - CUT OUT: 1000 kPa

COMBINED SPRINKLER & HYDRANT BLOCK PLAN

LEEMARK
FIRE PROTECTION
PHONE: (03) 9873 1525 FAX: (03) 9873 1587

FIRE ALARM CONNECTED TO: ADT FIRE MONITORING
YEAR OF INSTALLATION: 2012 EMERGENCY FIRE CALLS Ph: 000

MITCHAM VILLAGE APARTMENTS
1-19 COLUMBO STREET
MITCHAM